

Installation of Goals

- Always use the instructions and recommendations provided by the manufacturer when installing equipment
- The appropriate personal protective equipment (PPE) must be worn at all times. I.E. Hard hat, steel toe cap boots, gloves, etc.
- When tall and/or heavy equipment is being assembled, it is recommended that scaffolding and/or heavy lifting equipment is used.
A risk assessment should be carried out if necessary.
- Installation should only be undertaken by, or under the direct supervision of, trained persons with enough experience and with the adequate assistance for the size of the goal being assembled.
- For spares or assistance please get in contact with MH GOALS Via -

T - 01502 711 298

E - Info@mhgoals.com

W - www.mhgoals.com



Warning: Small parts.
Not for children 3 and under.

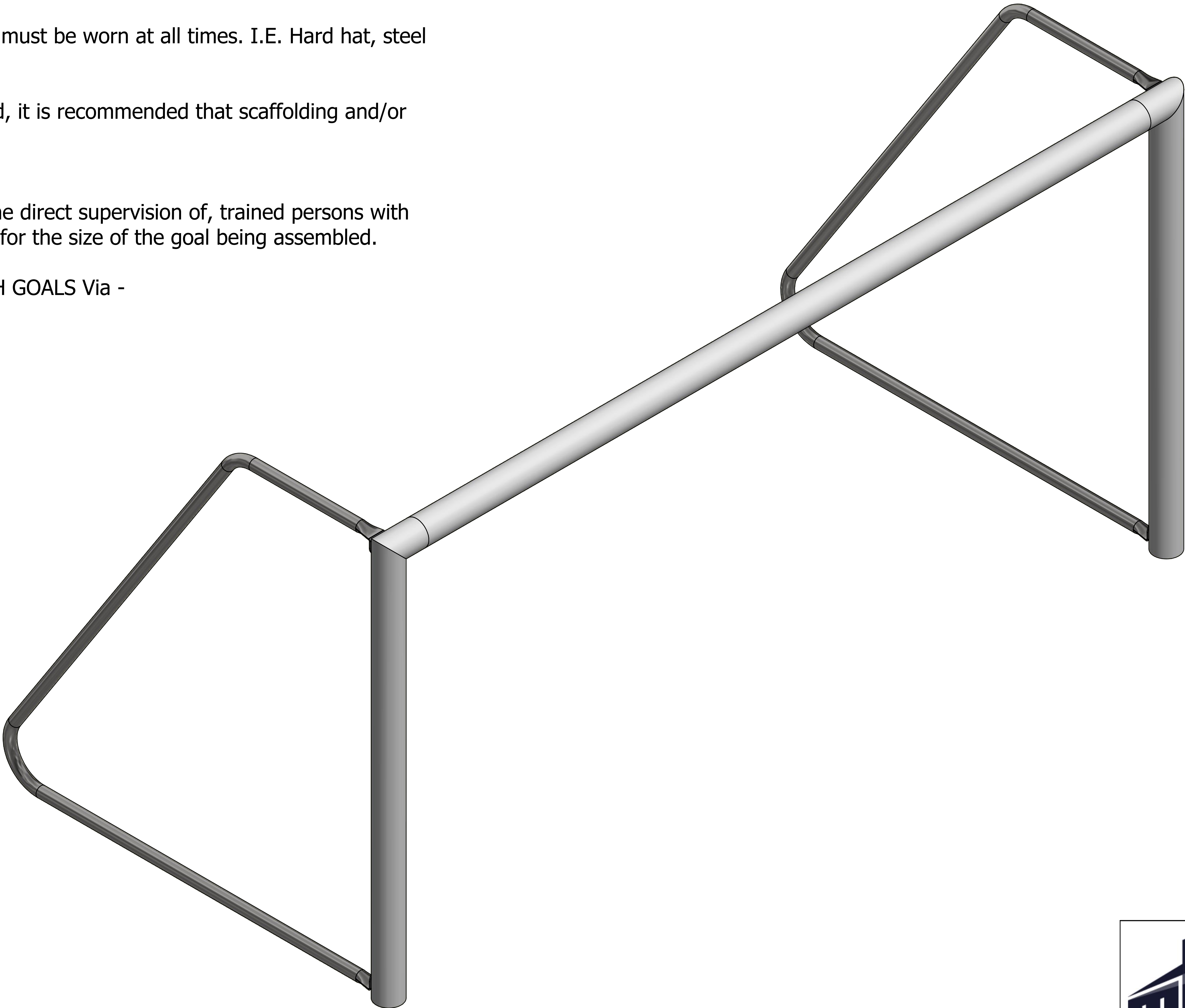


Warning:
Adult Assembly Required!

Warning: Assembly kit contains small parts that can present choking hazards for children.

Warning: Assembly kit contains parts with sharp edges.

Warning: Components are packed in plastic bags that could present a suffocation hazard. Dispose of plastic bags as soon as unpacked.



MH Goals Ltd,
Elloough Industrial Estate,
Beccles, Suffolk,
NR34 7TD

Intructions for Fixed
Frame Garden Goals

SHEET 1 OF 7 REVISION 1

PARTS LIST

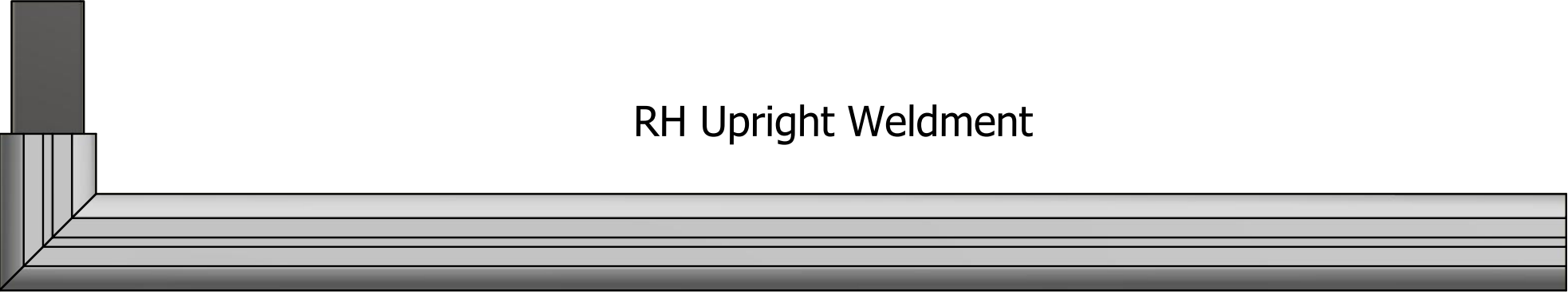
ITEM	PART NUMBER	QTY
1	Crossbar	1
2	LH Upright Weldment	1
3	RH Upright Weldment	1
4	Fixed 32mm Ø Net Support	2
5	FT-677 - Joining Plate	2
6	FT-674 - Aluminium Square Spacer	4
7	FT-679 - Coach Bolt Fixing Plate	4
8	FT-675 - M8 Sliding Channel Nut	8
9	FT-2073 - M8 Washer	12
10	FT-684 - M8 Nyloc	4
11	FT-681 - M8 x 20 Hex Head Bolt	8
12	FT-680 - M8 x 25 Coach Bolt	4
13	FT-602 - Pack of U-Pegs	1
14	HOOK-009 - Holdfast Net Hook Key	1
15	HOOK-010 - Bag of Holdfast Net Hooks	1



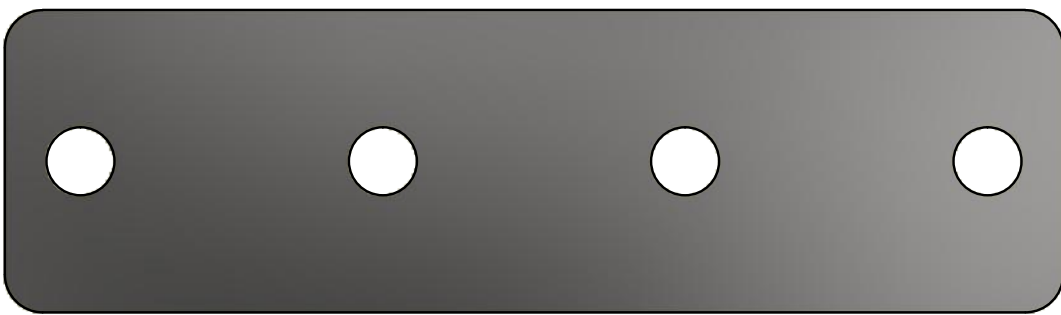
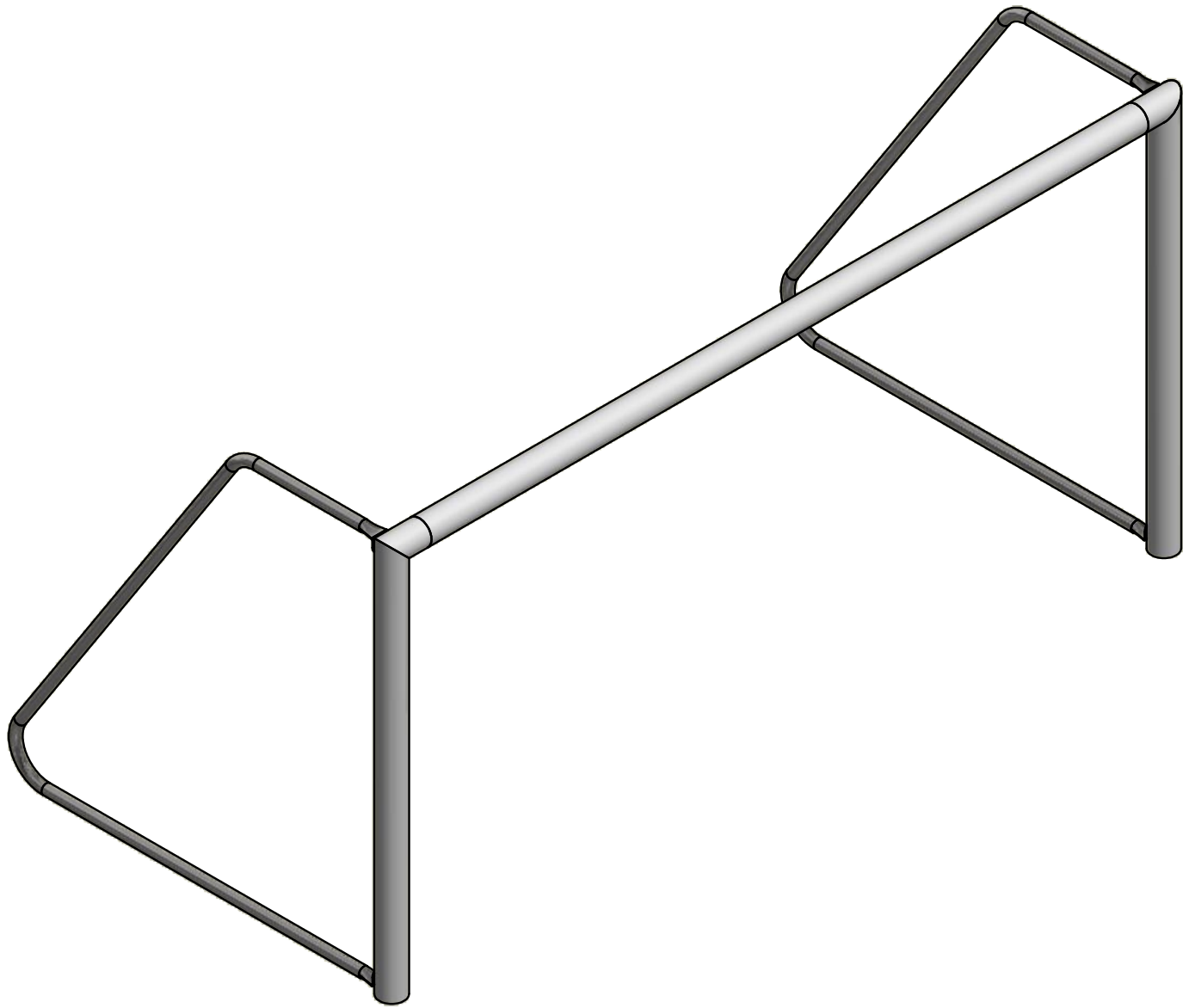
Crossbar



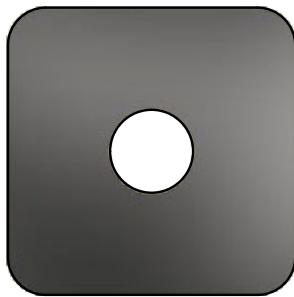
LH Upright Weldment



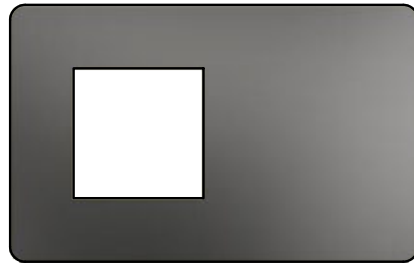
RH Upright Weldment



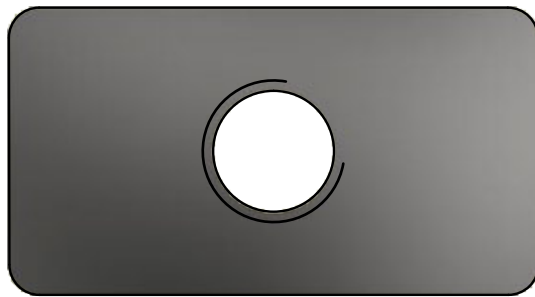
Joining Plate



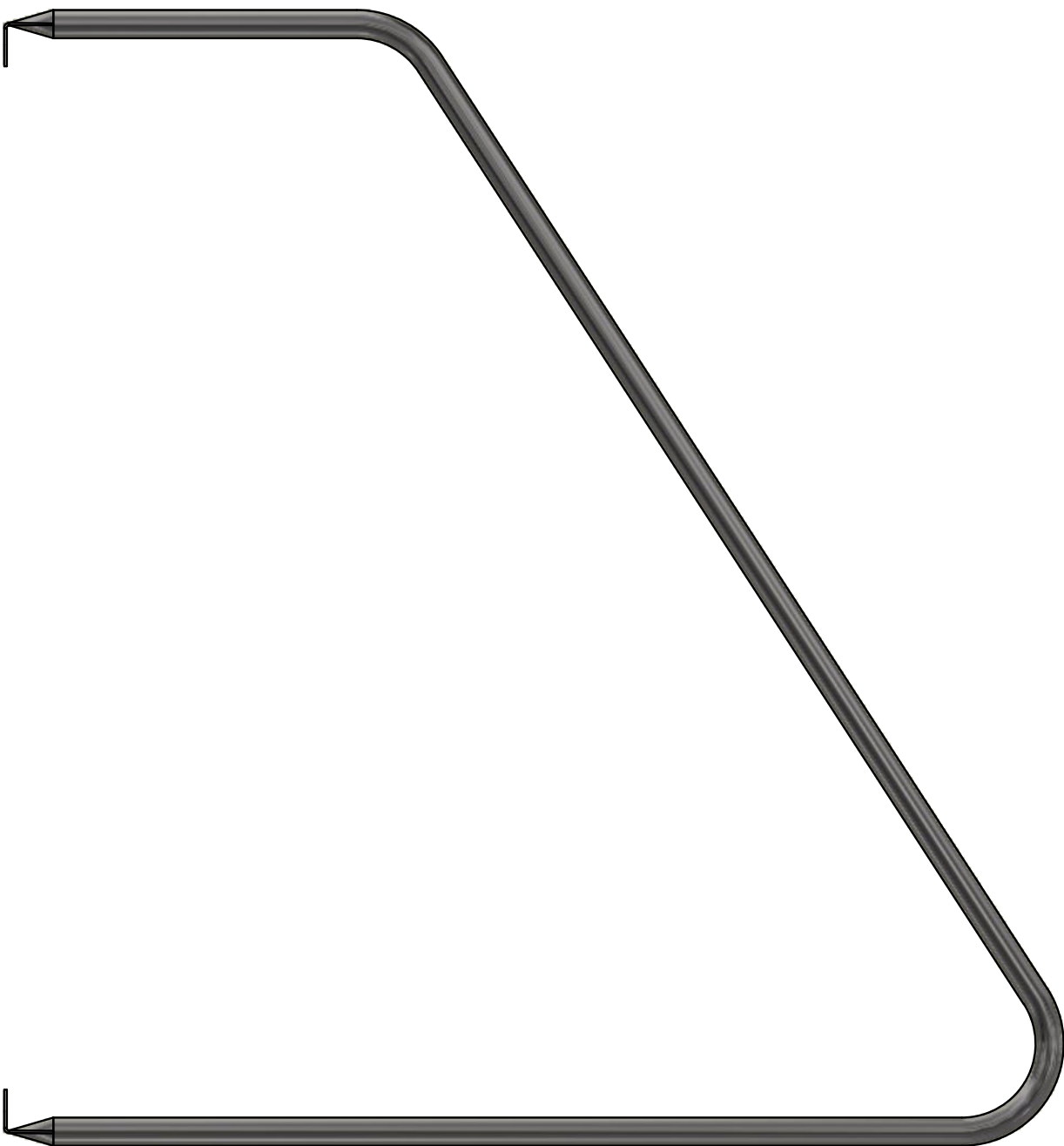
Aluminium Square Spacer



Coach Bolt Fixing Plate



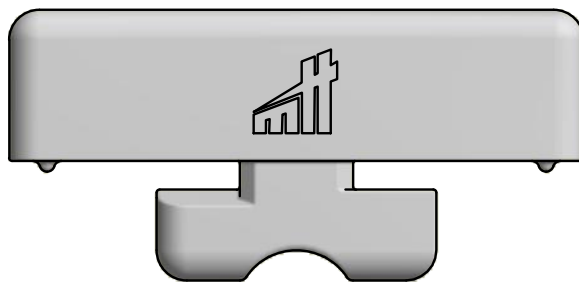
M8 Channel Nut



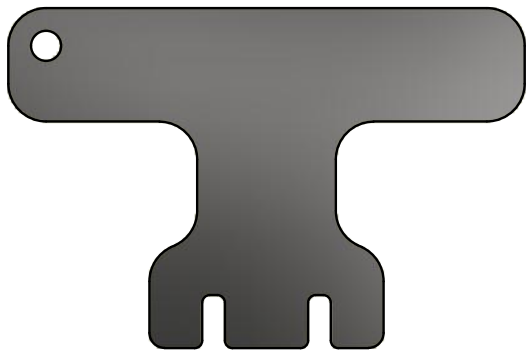
Fixed 32mm Ø Net Support



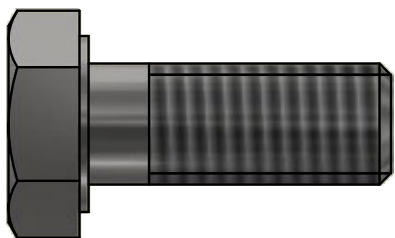
U Peg Anchor



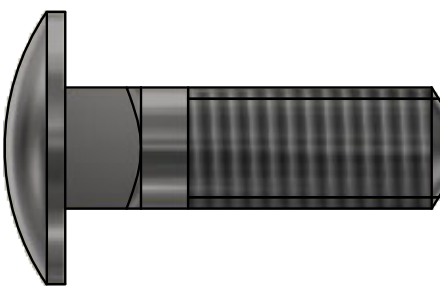
Holdfast Net Hook



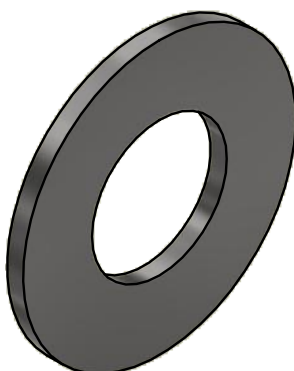
Holdfast Net Hook Key



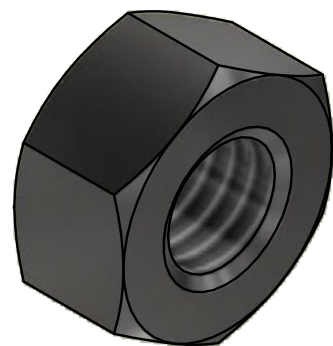
M8 x 20 Hex Head Bolt



M8 x 25 Coach Bolt



M8 Washer



M8 Nyloc

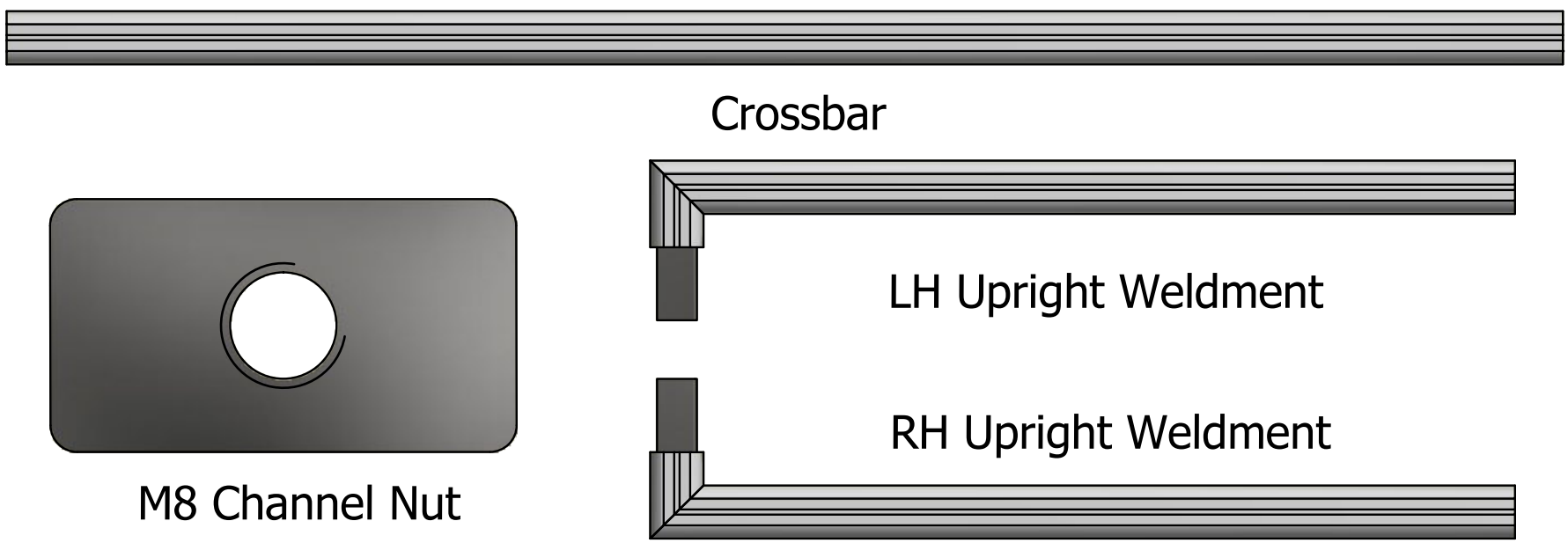


MH Goals Ltd,
Elloough Industrial Estate,
Beccles, Suffolk,
NR34 7TD

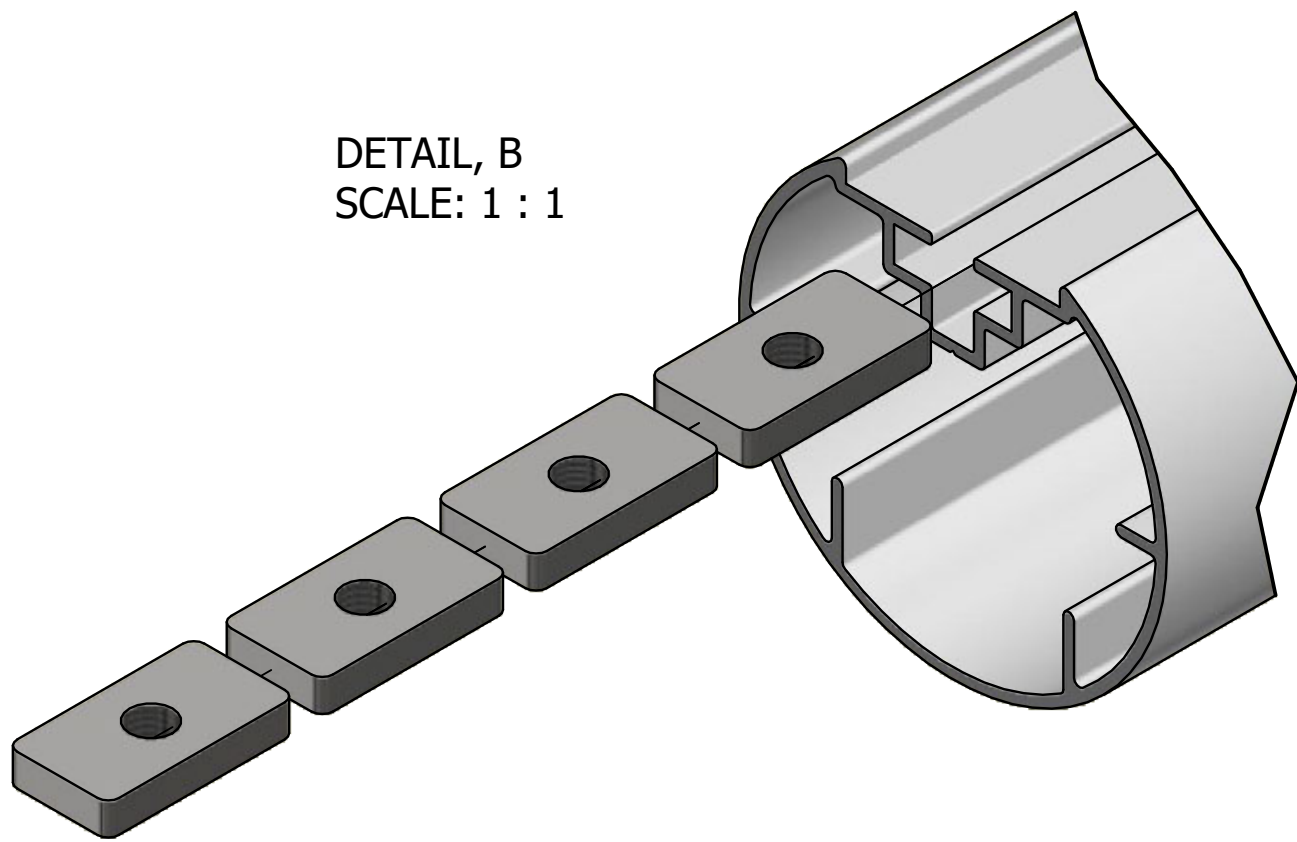
Intructions for Fixed
Frame Garden Goals

SHEET 2 OF 7
REVISION 1

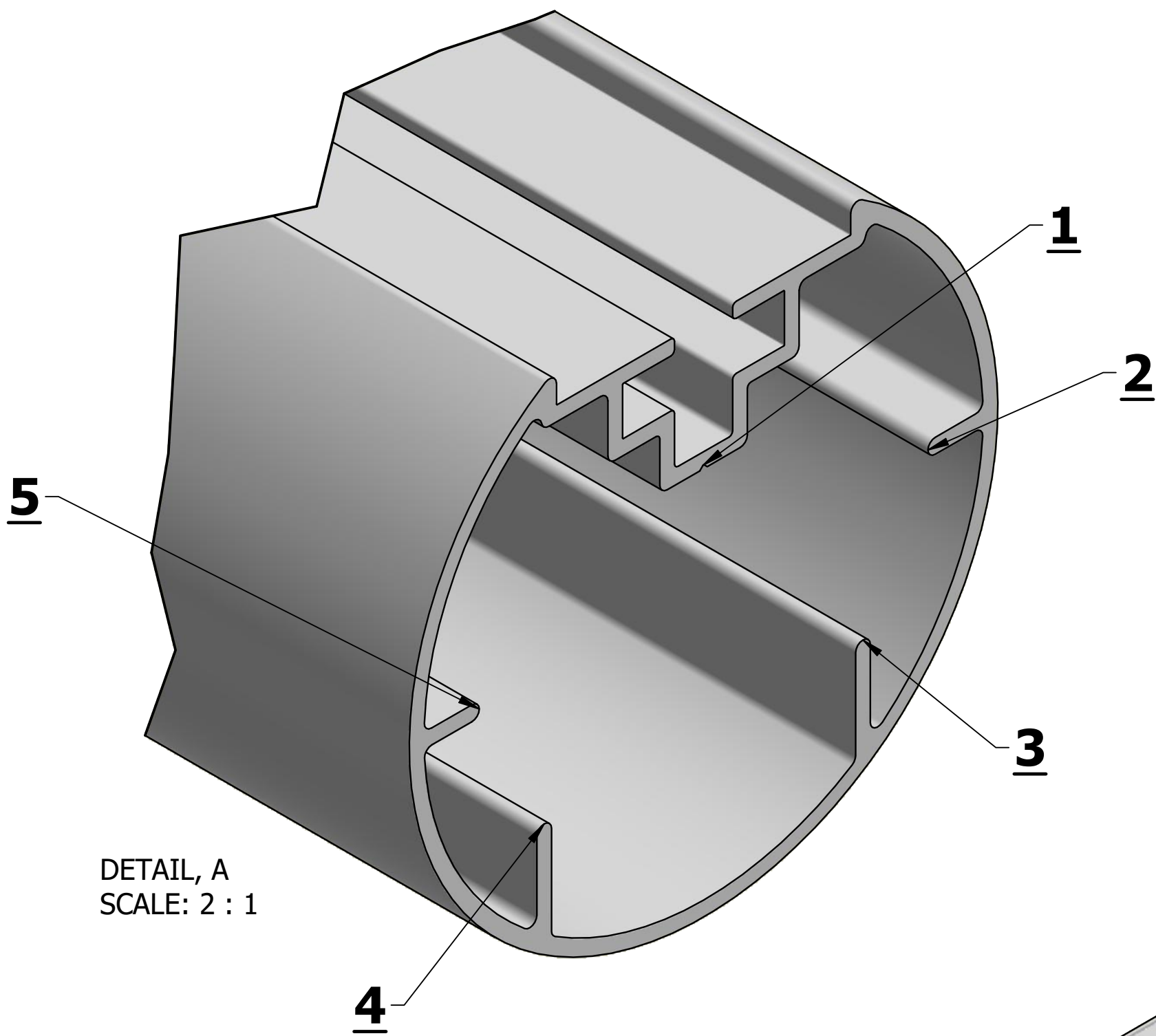
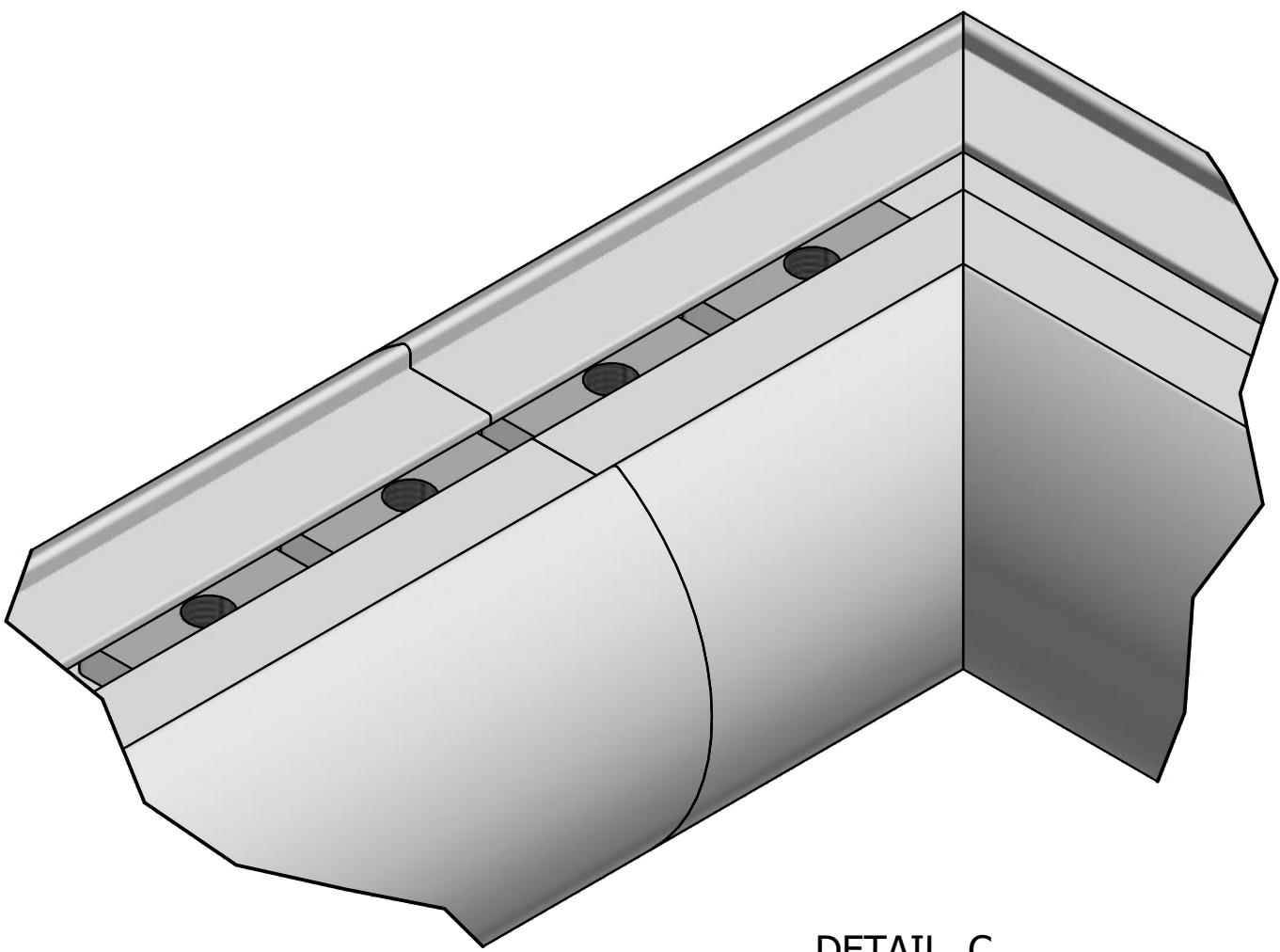
Parts Required



DETAIL, B
SCALE: 1 : 1



DETAIL, C
SCALE: 1 : 1



DETAIL, A
SCALE: 2 : 1

Step 1 -

Take the aluminium crossbar extrusion along with the upright weldments, laying them on a flat surface with the channel section facing upwards.

Using Details B & C as a guide, slide 2 M8 channel nuts into each end of the crossbar.

Using Details B & C as a guide, slide 2 M8 channel nuts into the top corner of the both of the uprights.

To attach the uprights to the crossbar, slide the box section knuckle of the upright into the crossbar extrusion resting the box section on the 5 points shown in Detail A.

Once the uprights are connected to the crossbar move the channel nuts so that they are properly spaced on each side of the join, as shown in Detail C.

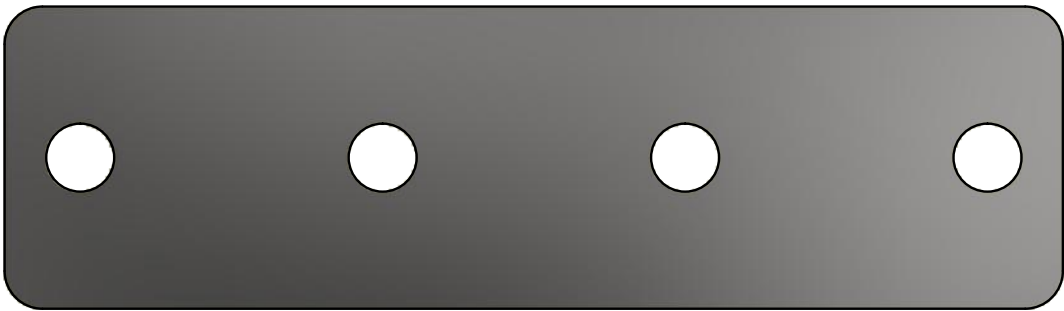


MH Goals Ltd,
Ellough Industrial Estate,
Beccles, Suffolk,
NR34 7TD

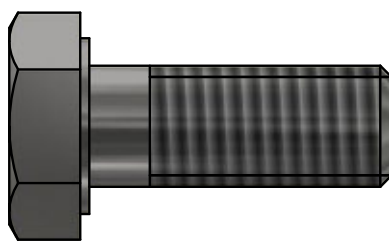
Intructions for Fixed
Frame Garden Goals

SHEET 3 OF 7 REVISION 1

Parts Required



Joining Plate



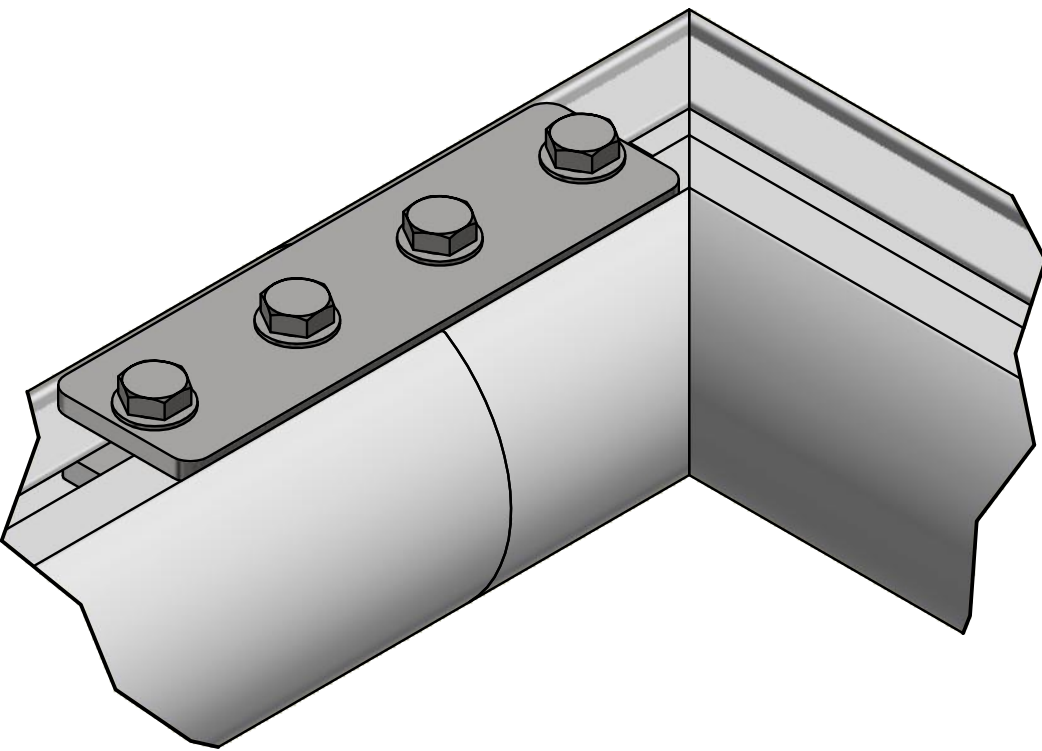
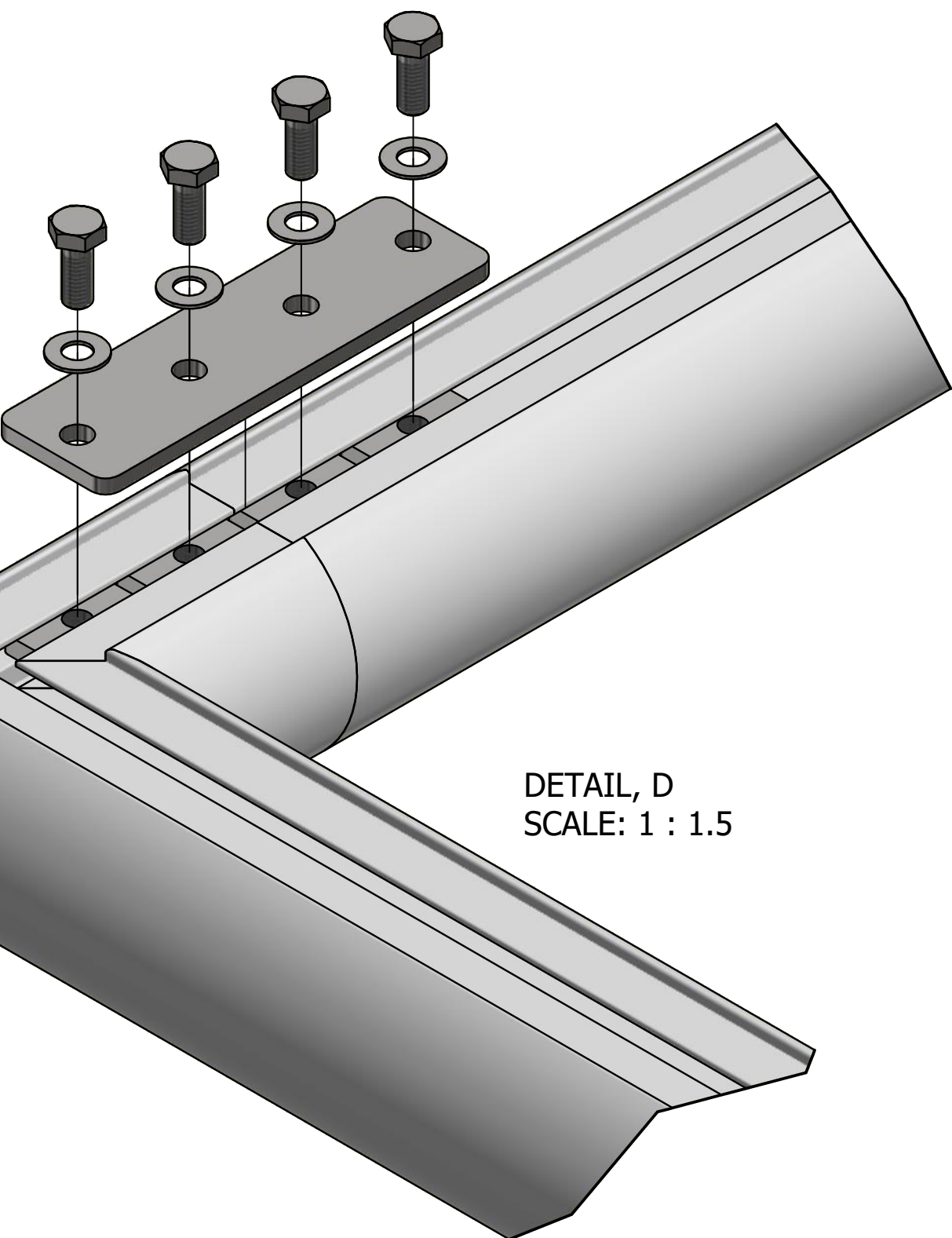
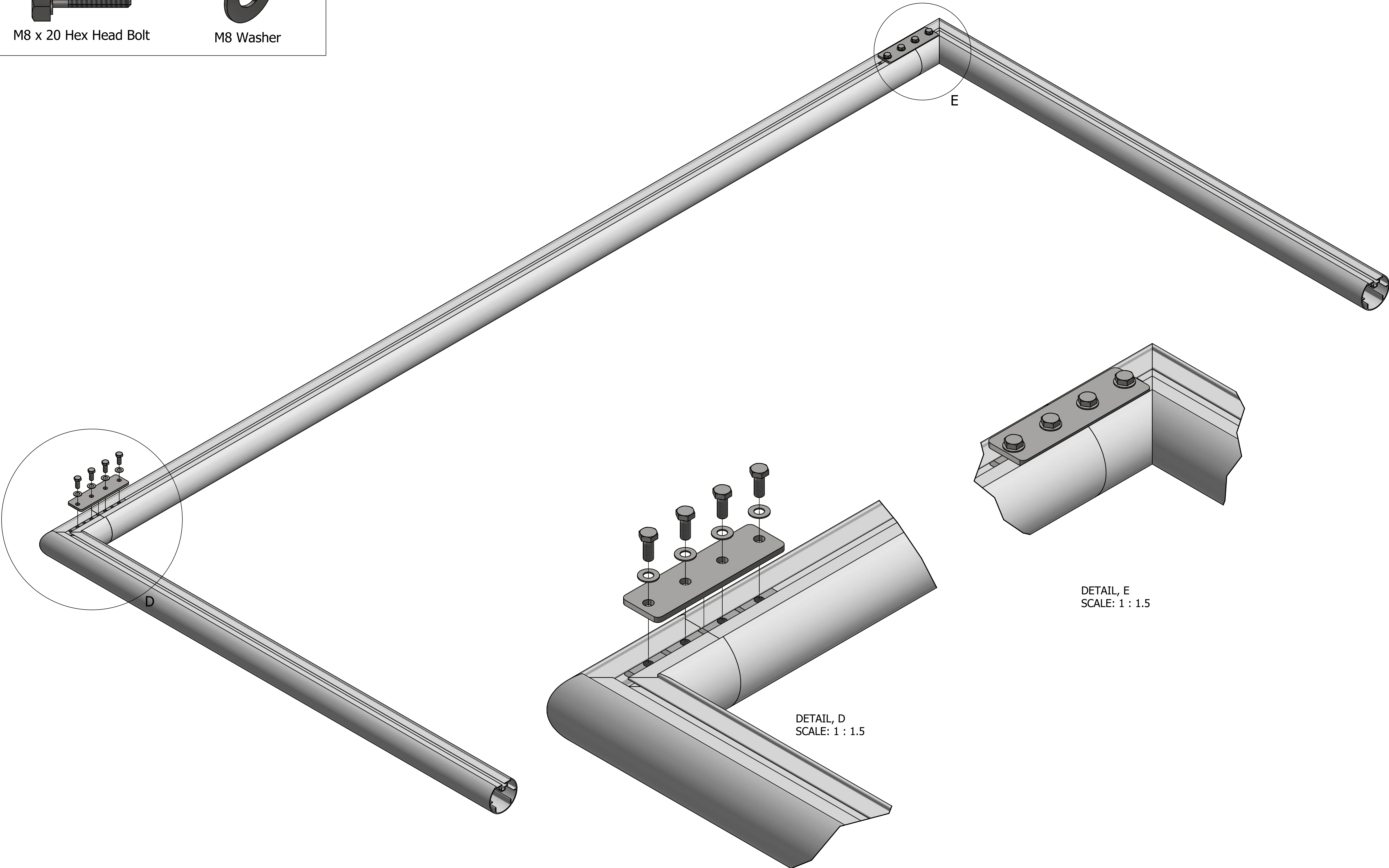
M8 x 20 Hex Head Bolt



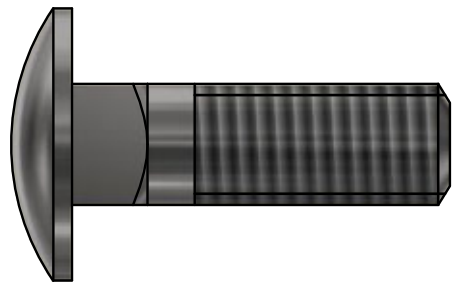
M8 Washer

Step 2 -

To fix the uprights and crossbar together, with the knuckle slid into the crossbar from Step 1, place a joining plate over the channel nuts positioned in the previous step, making sure that the join between the uprights and crossbar sits roughly in the middle of the joining plate. Place an M8 washer over an M8 x 20 hex head bolt, place through the joining plate and bolt into the channel nut behind. Repeat this process for both joining plates as shown in Details D & E.



Parts Required



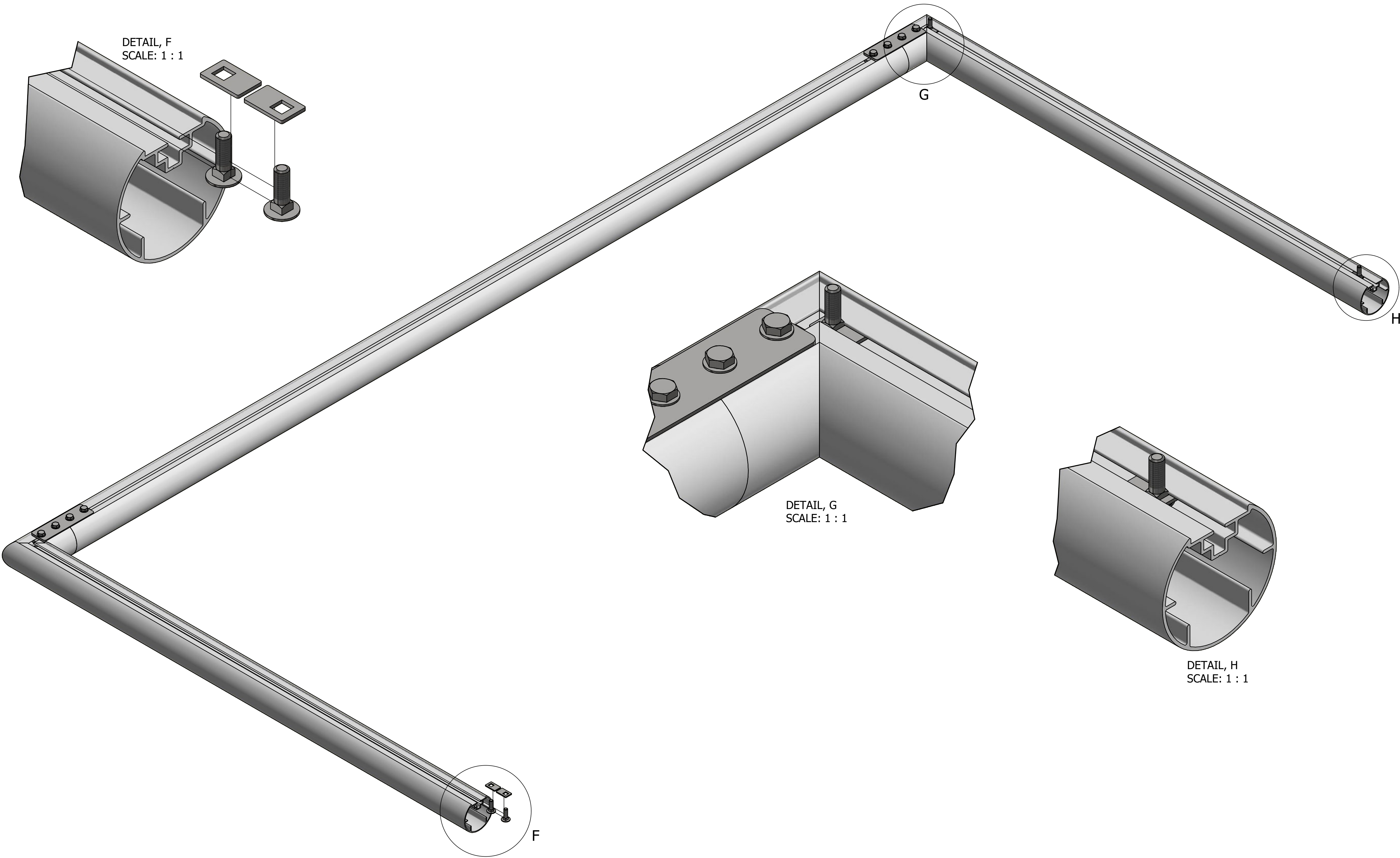
M8 x 25 Coach Bolt



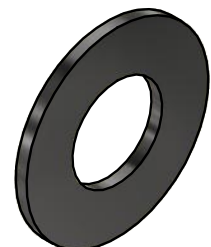
Coach Bolt Fixing Plate

Step 3 -

For this step, take the supplied M8 x 25 coach bolts and coach bolt fixing plates. Place the fixing plate over the coach bolt and slide into the bottom of the uprights as shown in Detail F. Once all the coach bolts and plates as in the channel of the extrusion, slide one on each upright to the top corner as shown by Detail G, and slide the other two coach bolts and plates to the position shown in Detail H.



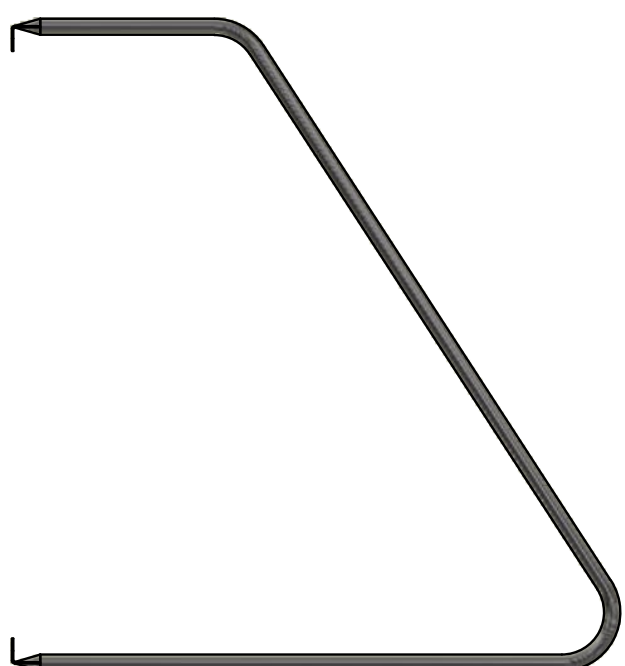
Parts Required



M8 Washer



M8 Nyloc



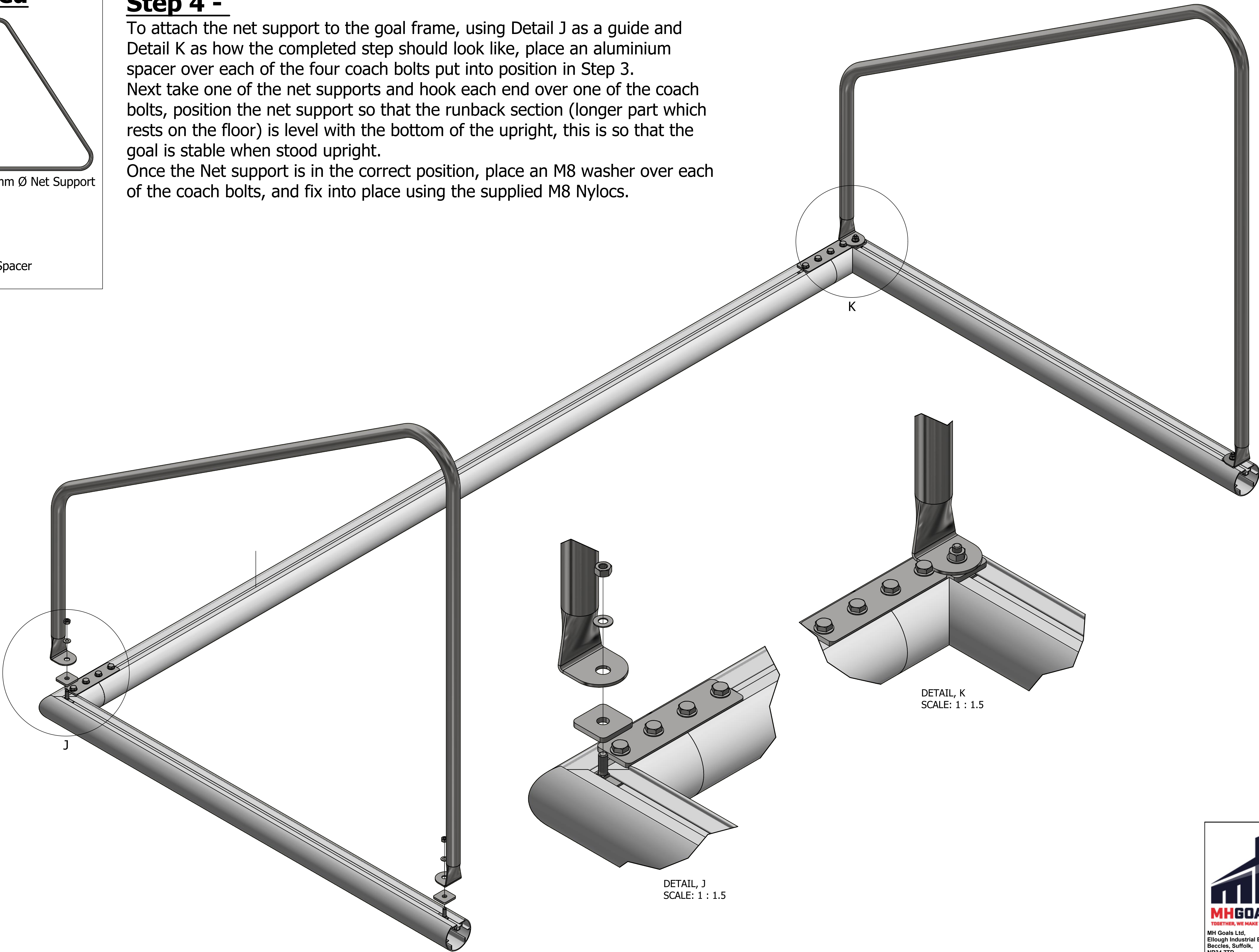
Fixed 32mm Ø Net Support



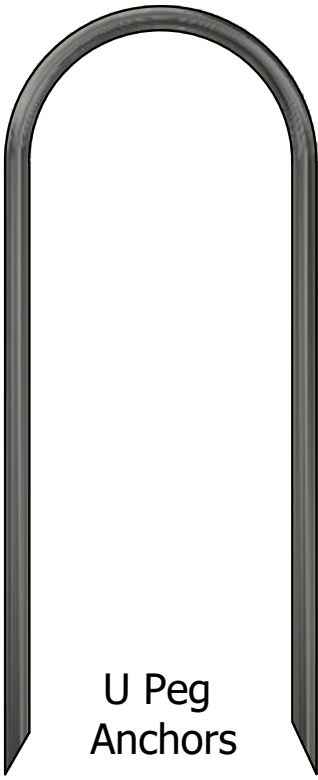
Aluminium Square Spacer

Step 4 -

To attach the net support to the goal frame, using Detail J as a guide and Detail K as how the completed step should look like, place an aluminium spacer over each of the four coach bolts put into position in Step 3. Next take one of the net supports and hook each end over one of the coach bolts, position the net support so that the runback section (longer part which rests on the floor) is level with the bottom of the upright, this is so that the goal is stable when stood upright. Once the Net support is in the correct position, place an M8 washer over each of the coach bolts, and fix into place using the supplied M8 Nylocs.

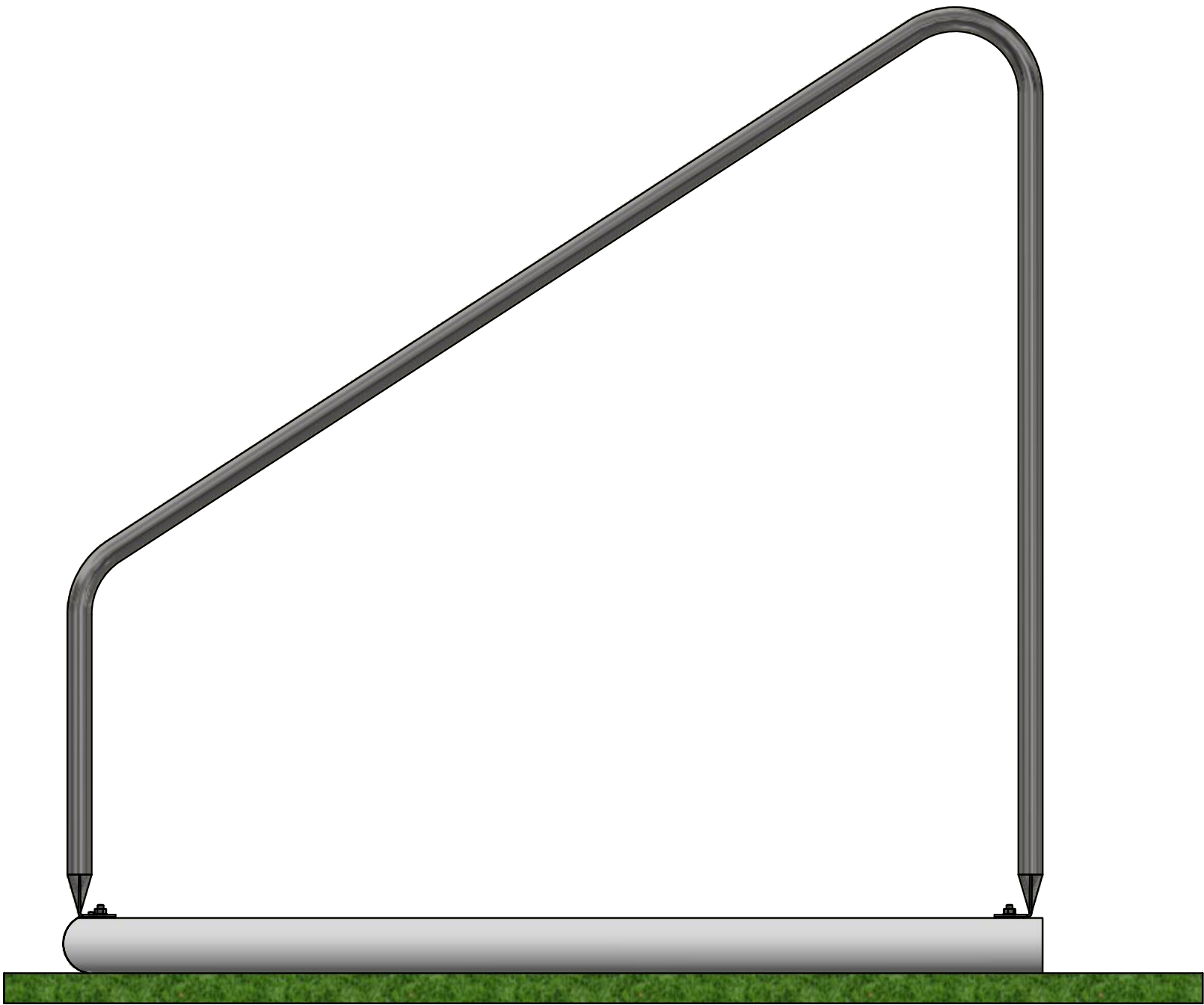


Parts Required



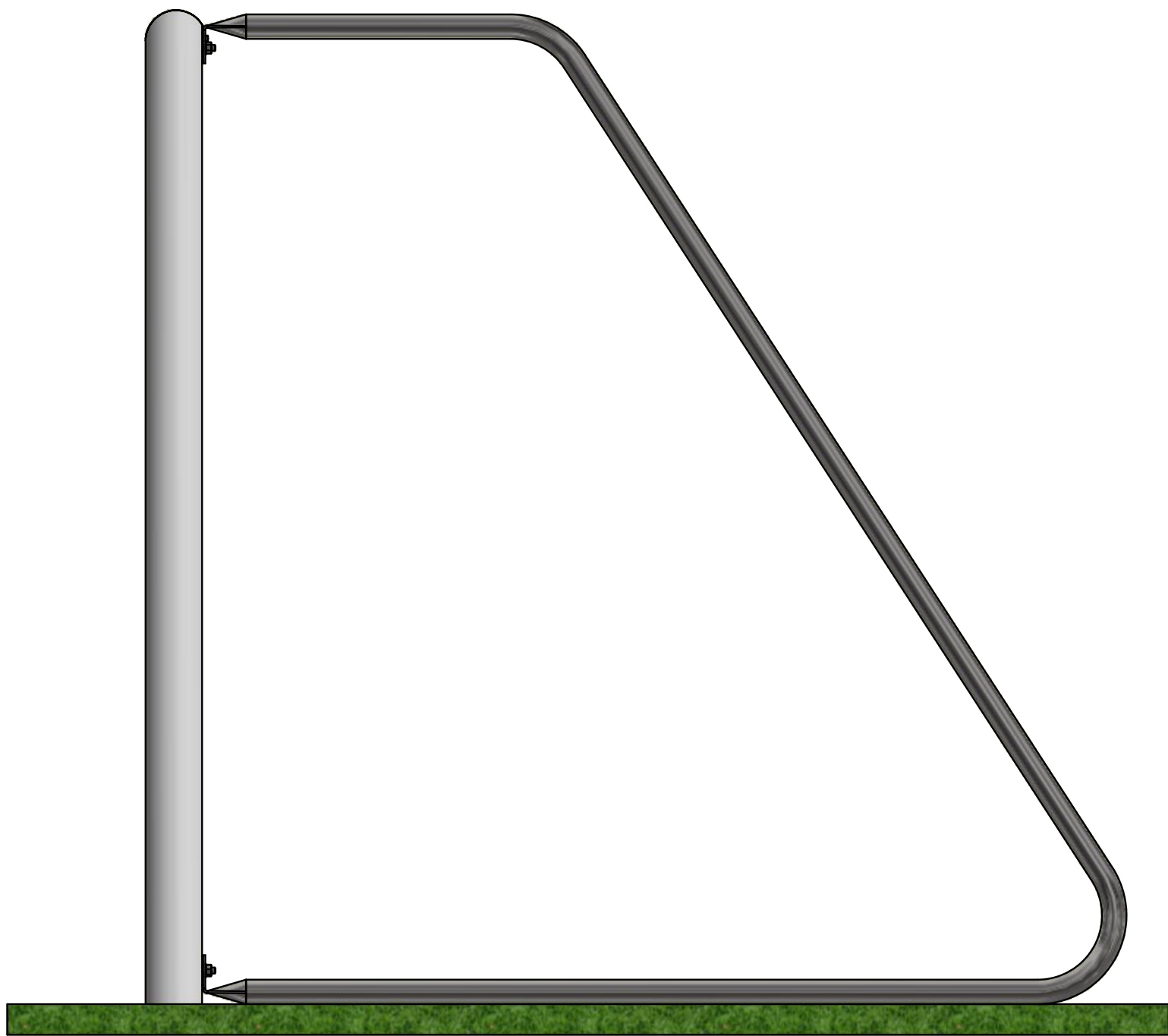
U Peg
Anchors

WARNING - SWINGING OR CLIMBING ON THIS GOAL CAN CAUSE SERIOUS INJURY
THIS GOAL CONFORMS TO BS 16579: 2018 WHEN IT IS
ANCHORED/INSTALLED TO THE MANUFACTURERS INSTRUCTIONS
BEFORE USING THIS PRODUCT CHECK ALL FASTENINGS ARE
SECURE AND FULLY TIGHTENED
MAKE SURE THIS GOAL IS PROPERLY ANCHORED/INSTALLED AT ALL TIMES

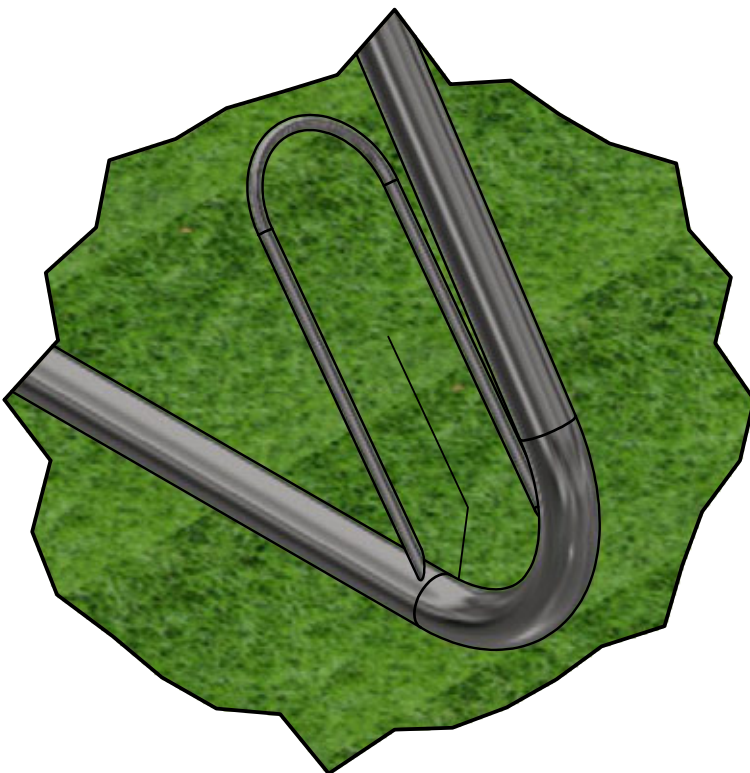
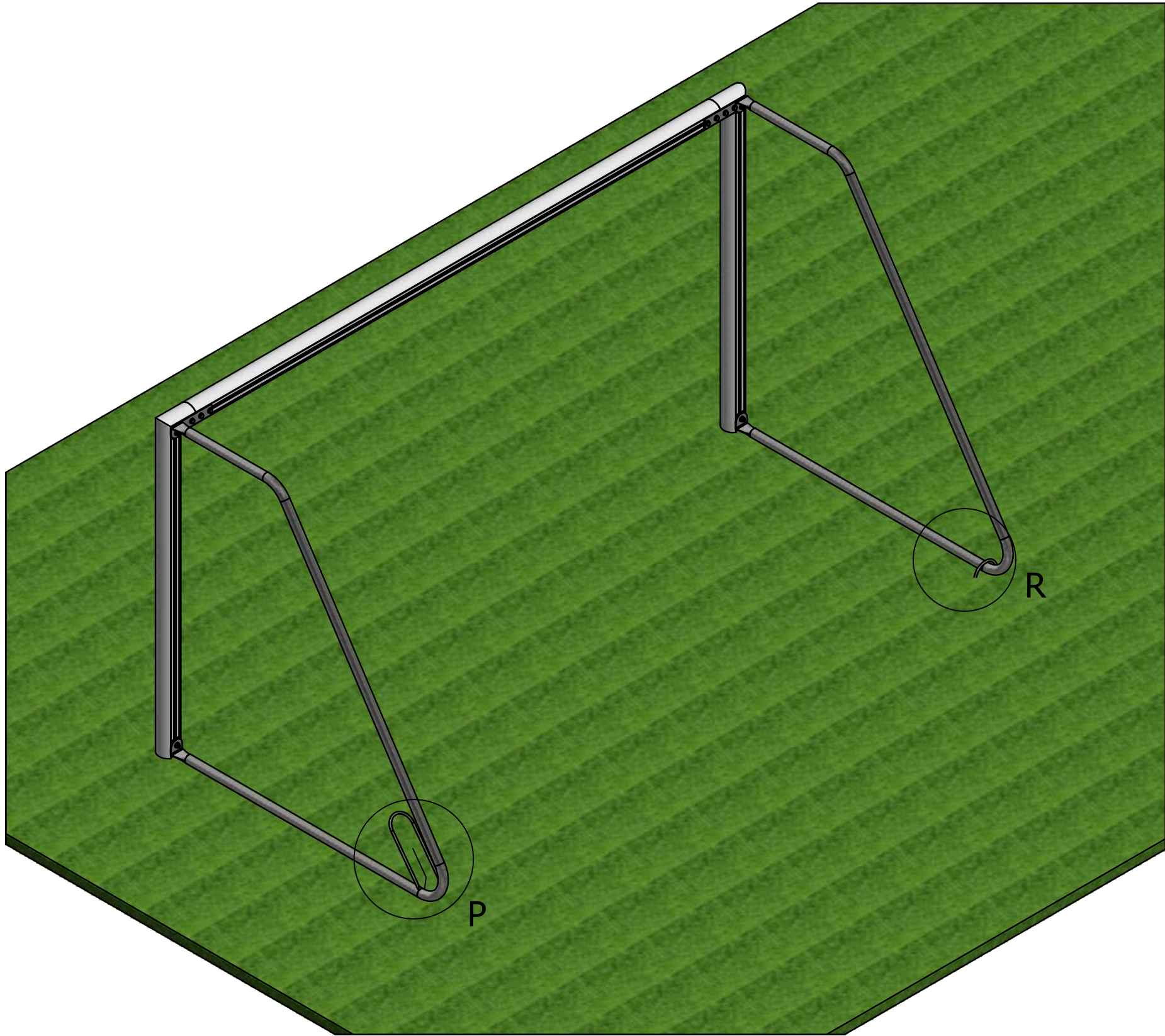


Step 5 -

For this step, with a **minimum** of two people, rotate the goal so that it is now stood up correctly as if ready to use.



DETAIL, R
SCALE: 1 : 4



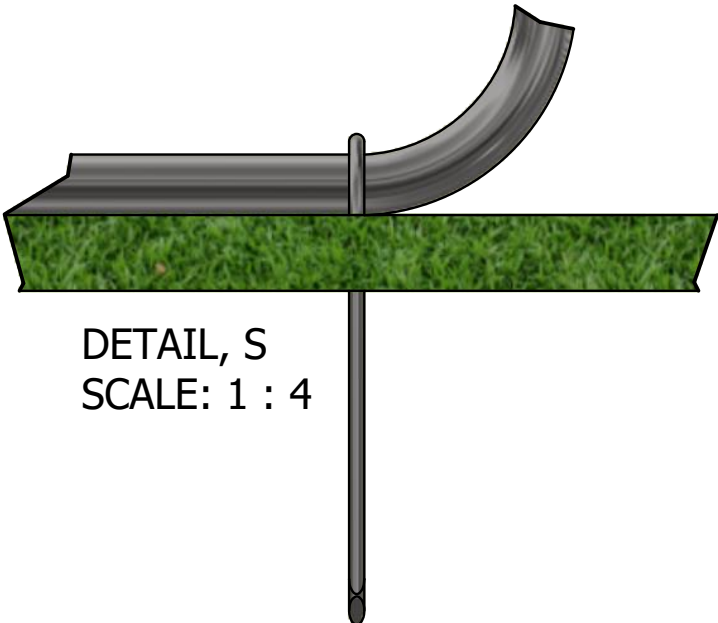
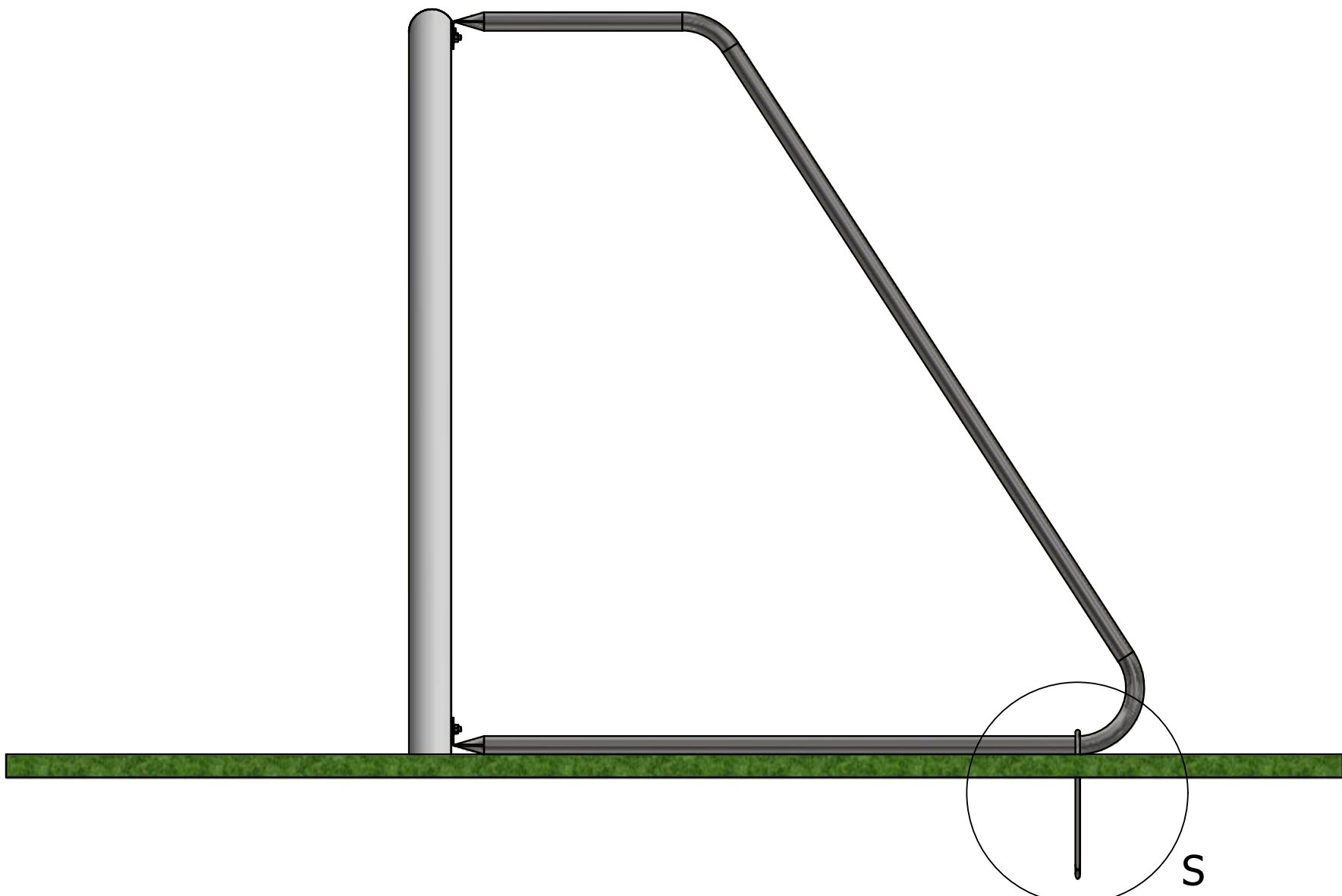
DETAIL, P
SCALE: 1 : 4

Step 6 -

To secure the goal into position, place the U peg anchors over the Net Support towards the back corner as indicated by the Anchor Point stickers and as shown in Details P, R & S.

This goal MUST be anchored when in use to conform to BS 16579:2018

To Complete the goal, just attach the net and secure in place using the supplied Holdfast Net Hooks.



DETAIL, S
SCALE: 1 : 4



MH Goals Ltd,
Ellough Industrial Estate,
Beccles, Suffolk,
NR34 7TD

Intructions for Fixed
Frame Garden Goals

SHEET 7 OF 7 REVISION 1