

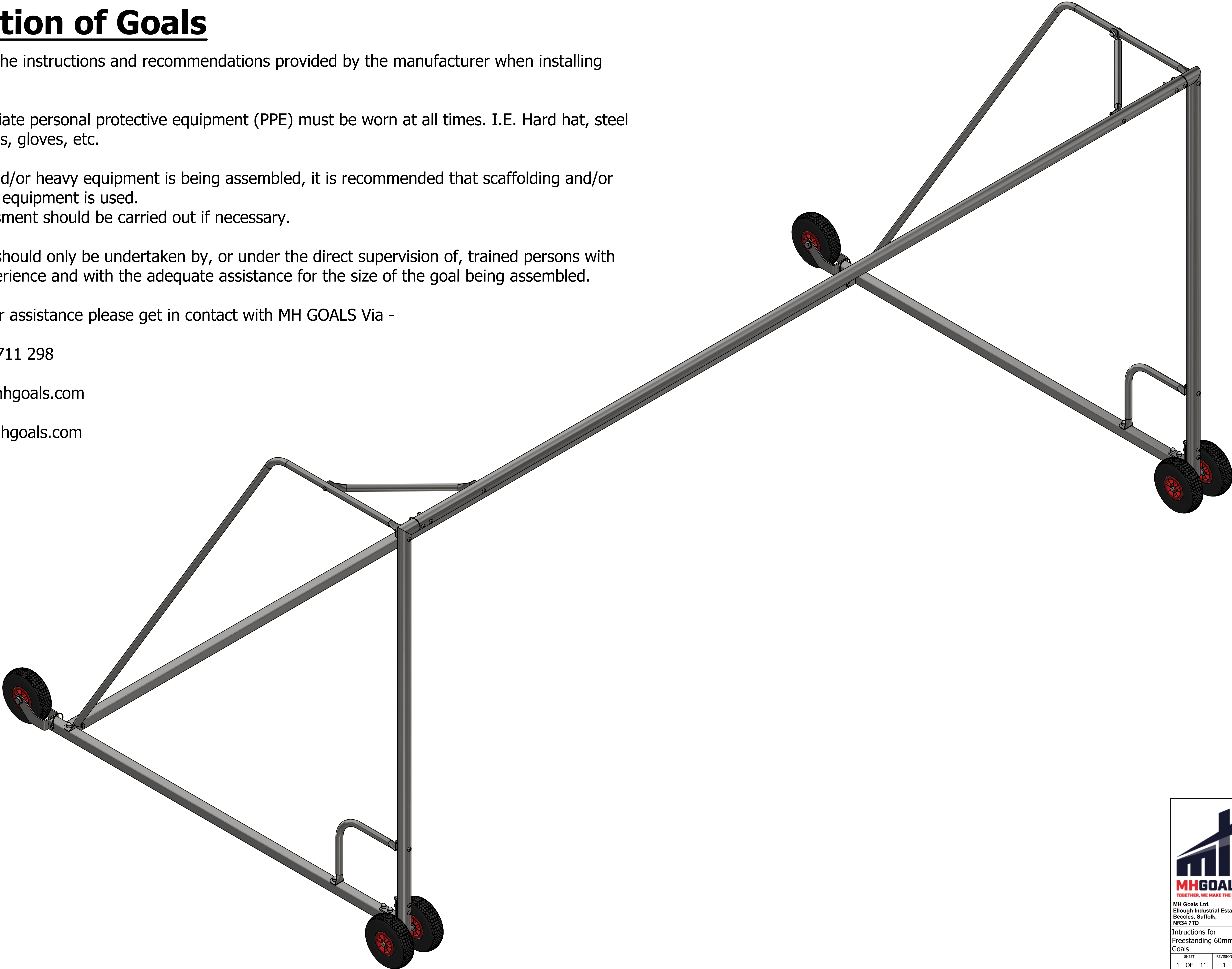
Installation of Goals

- Always use the instructions and recommendations provided by the manufacturer when installing equipment
- The appropriate personal protective equipment (PPE) must be worn at all times. I.E. Hard hat, steel toe cap boots, gloves, etc.
- When tall and/or heavy equipment is being assembled, it is recommended that scaffolding and/or heavy lifting equipment is used.
A risk assessment should be carried out if necessary.
- Installation should only be undertaken by, or under the direct supervision of, trained persons with enough experience and with the adequate assistance for the size of the goal being assembled.
- For spares or assistance please get in contact with MH GOALS Via -

T - 01502 711 298

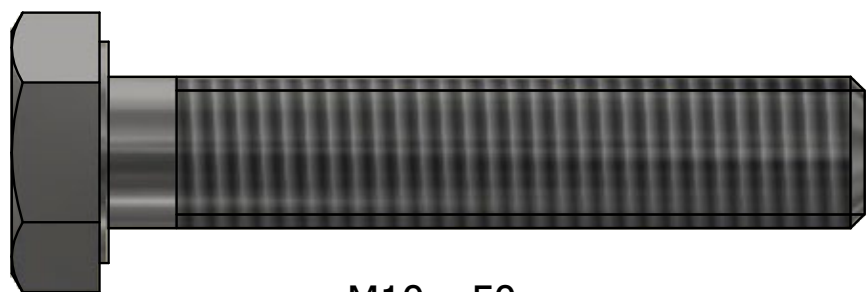
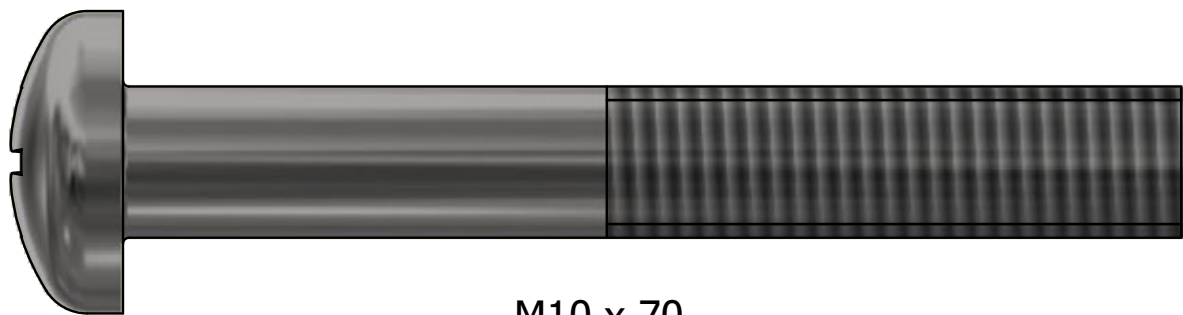
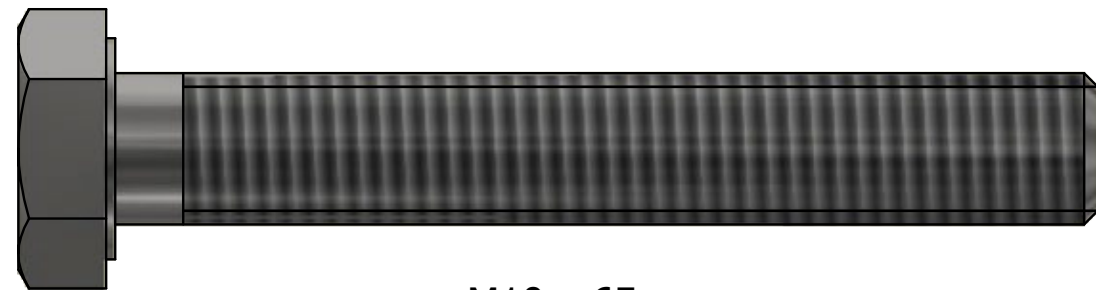
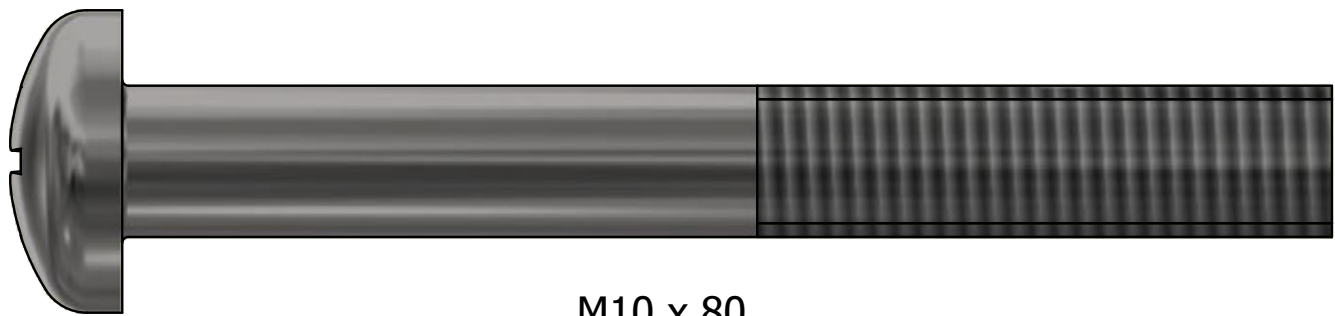
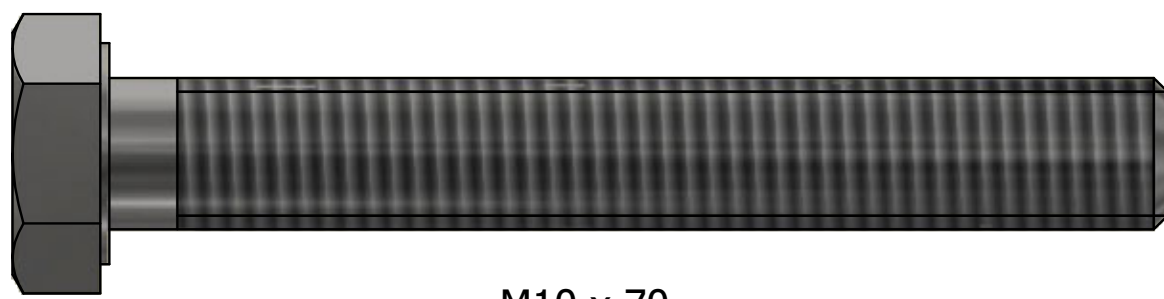
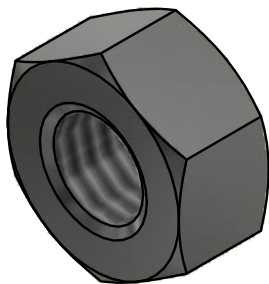
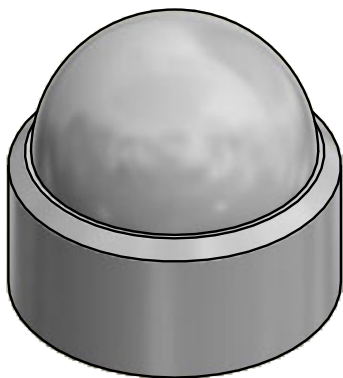
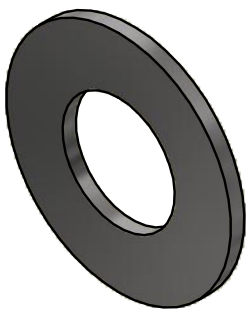
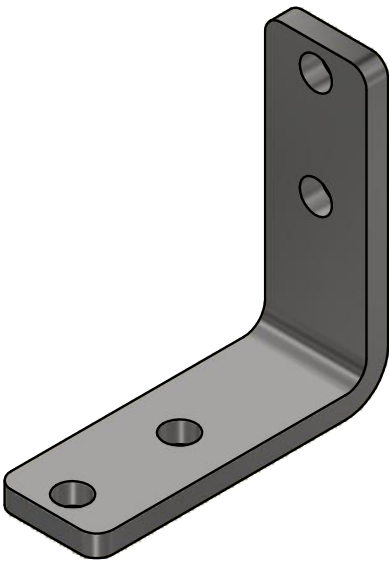
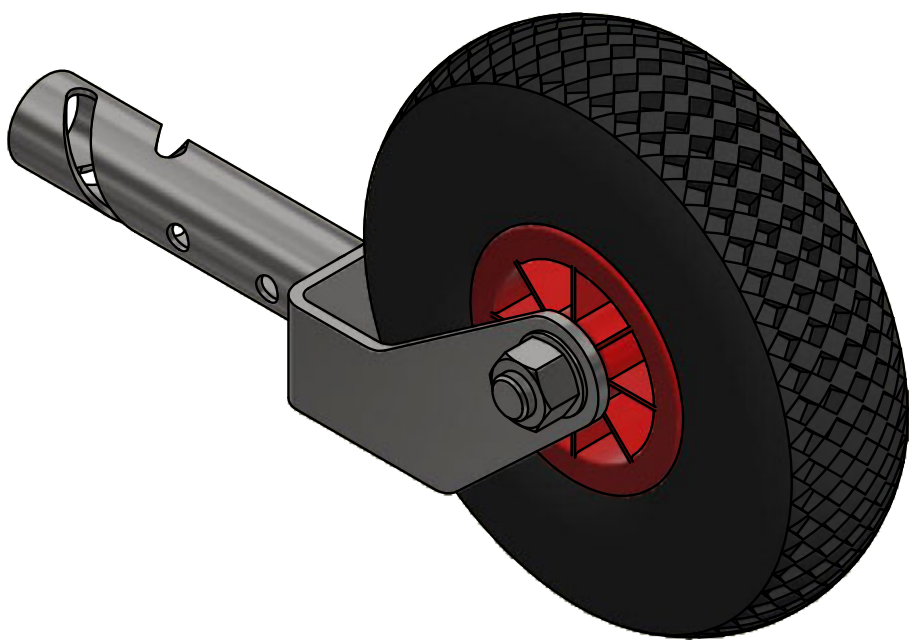
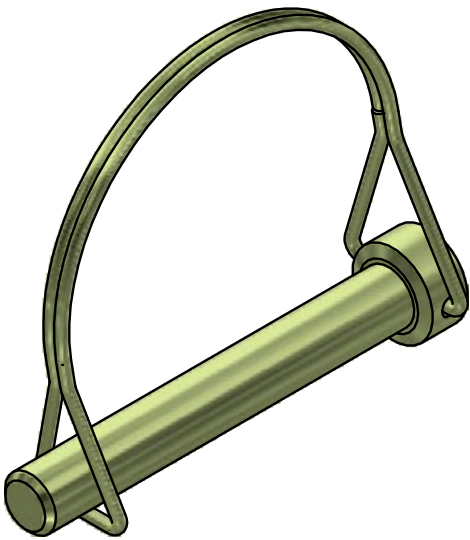
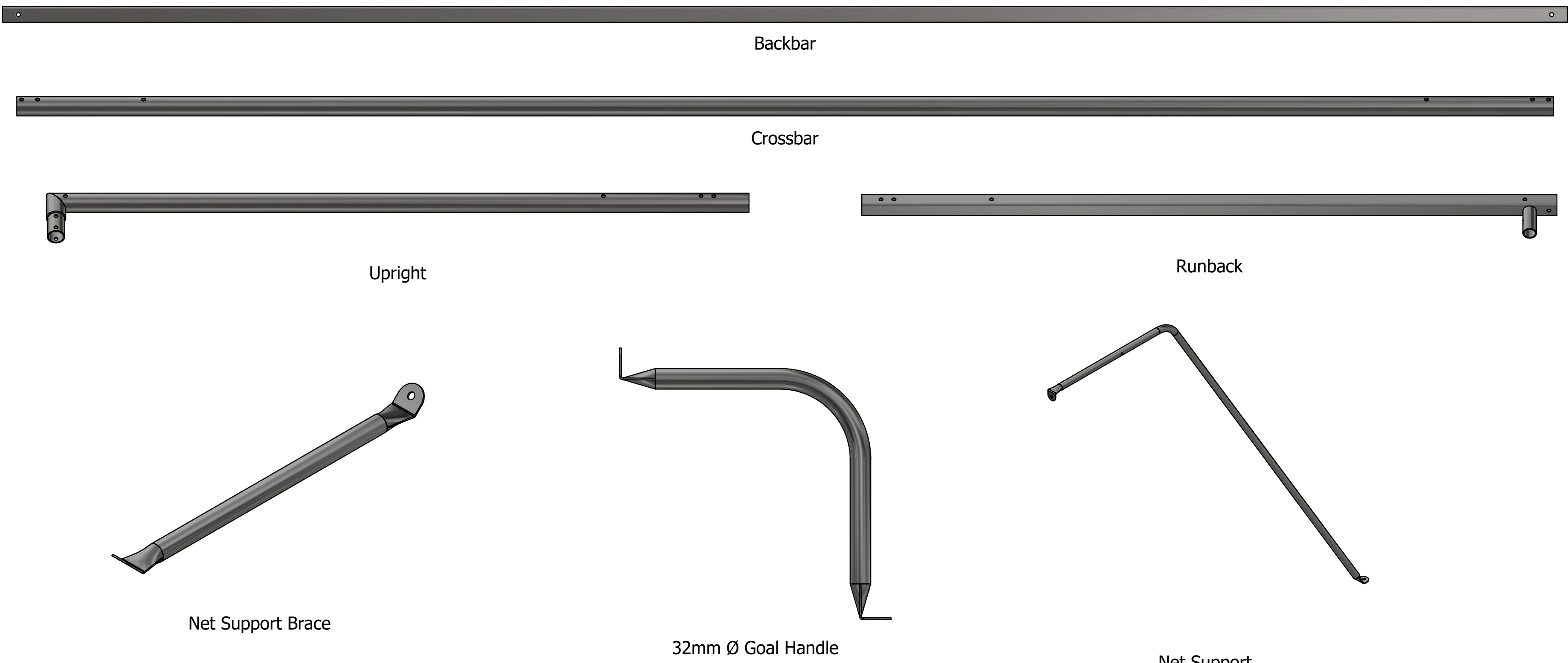
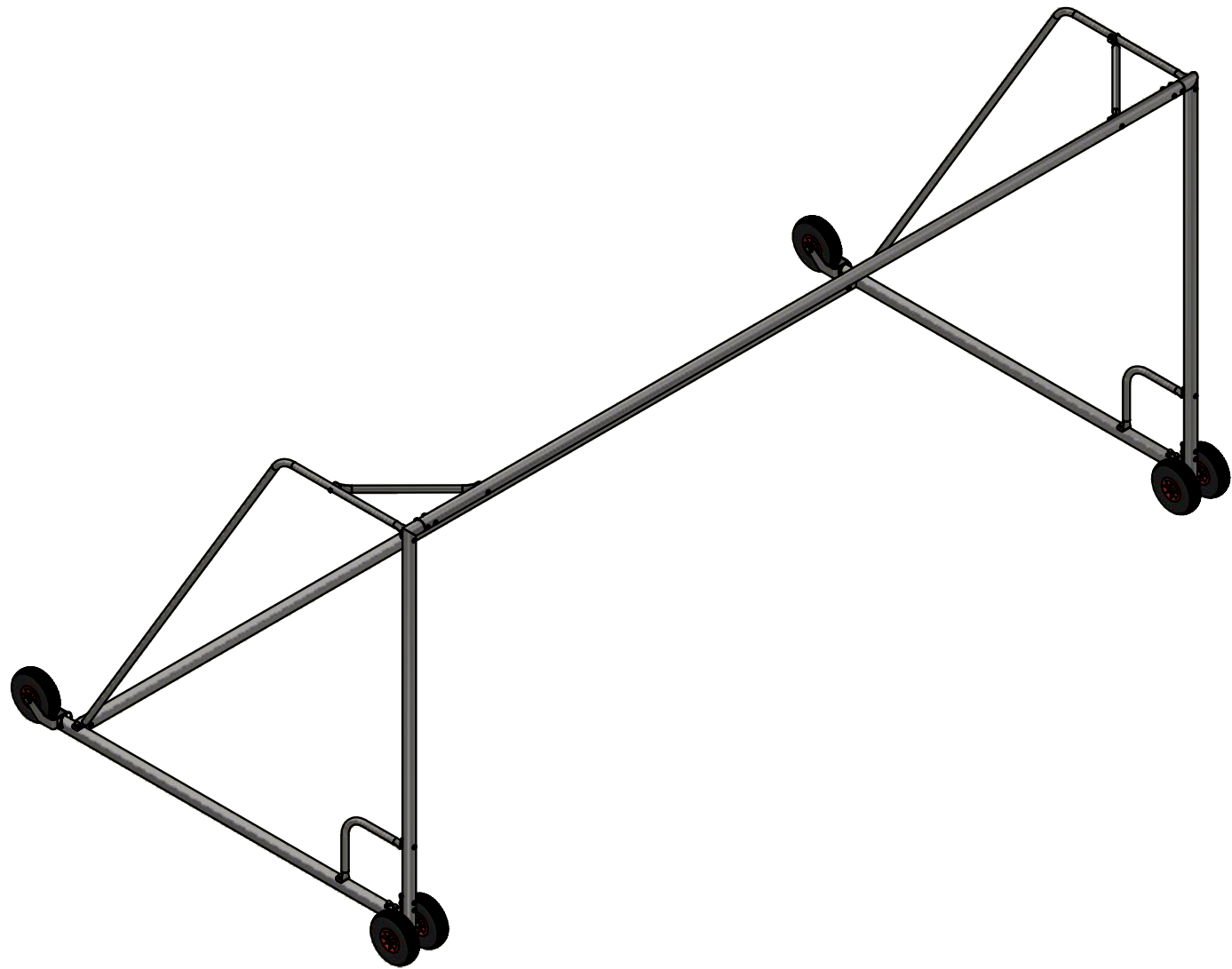
E - Info@mhgoals.com

W - www.mhgoals.com



Parts List

Item	QTY	Part Number
1	1	60mm Steel Crossbar
2	2	Freestanding 60mm Steel Upright
3	2	Freestanding 60mm Steel Runback
4	1	Freestanding 60mm Steel Backbar
5	2	32mm Ø Net Support
6	2	FT-672 - 32mm Ø Net Support Brace
7	2	FT-2095 - 32mm Ø Goal Handle
8	2	FT-3001 - L Bracket for 60mm Steel Goals
9	2	FT-3003 - Freestanding 60mm Steel Goal Detachable Front Wheel
10	2	FT-3002 - Freestanding 60mm Steel Goal Rear Wheel
11	2	FT-582 - Spring Retaining Clip
12	2	FT-682 - M10 x 50 Hex Head Bolt
13	2	FT-2097 - M10 x 65 Hex Head Bolt
14	8	FT-2098 - M10 x 70 Hex Head Bolt
15	4	FT-2099 - M10 x 70 Mushroom Head Roofing Bolt
16	10	FT-3000 - M10 x 80 Mushroom Head Roofing Bolt
17	36	FT-686 - M10 Washer
18	26	FT-685 - M10 Nyloc
19	26	FT-2083 - M10 Bolt Cap



The Freestanding 60mm Steel Goal Detachable Front Wheel will be included with 24 x 8 & 21 x 7 Freestanding 60mm Steel goals.

It is an optional extra available for 12 x 6 & 16 x 7 goals.

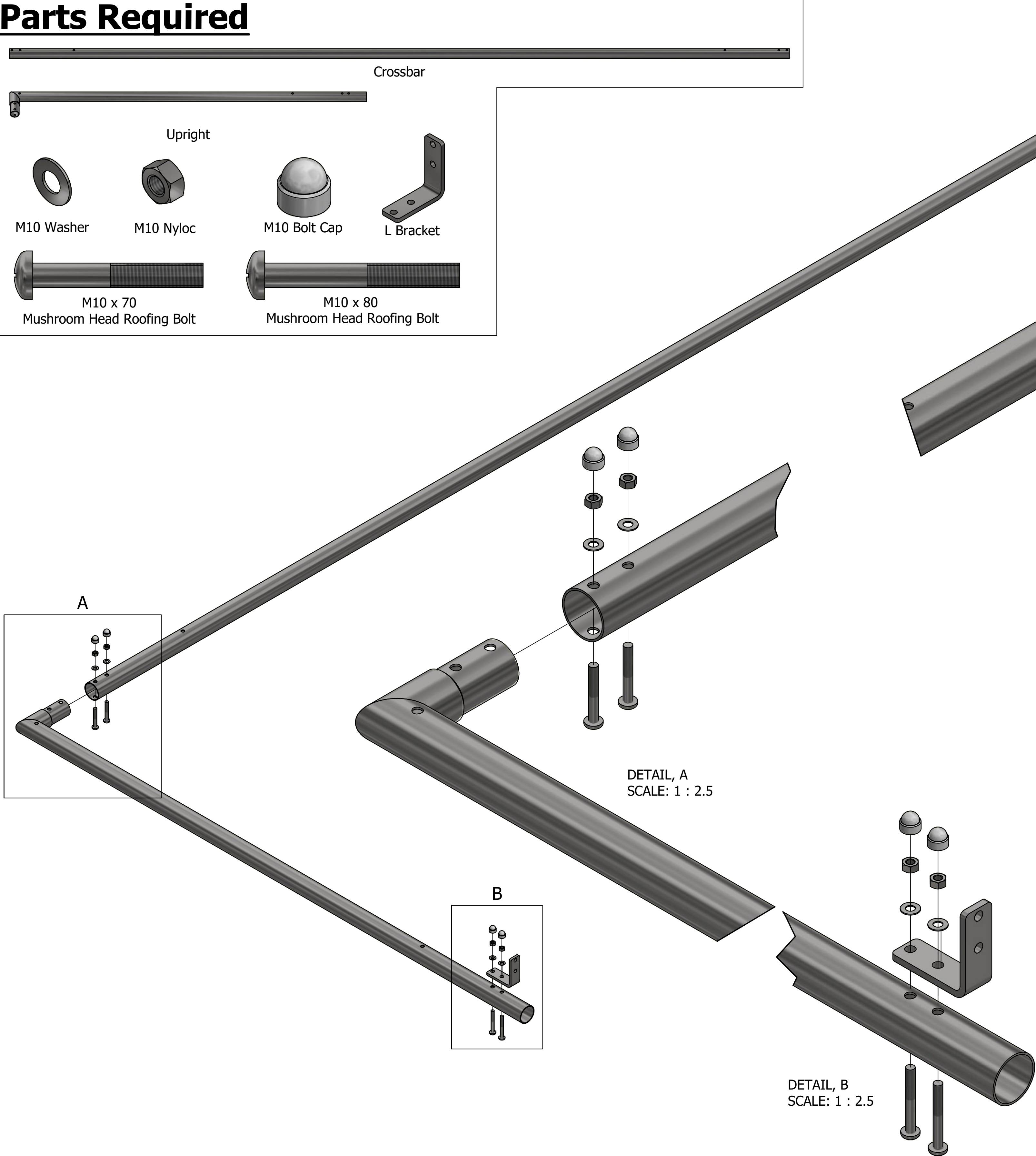
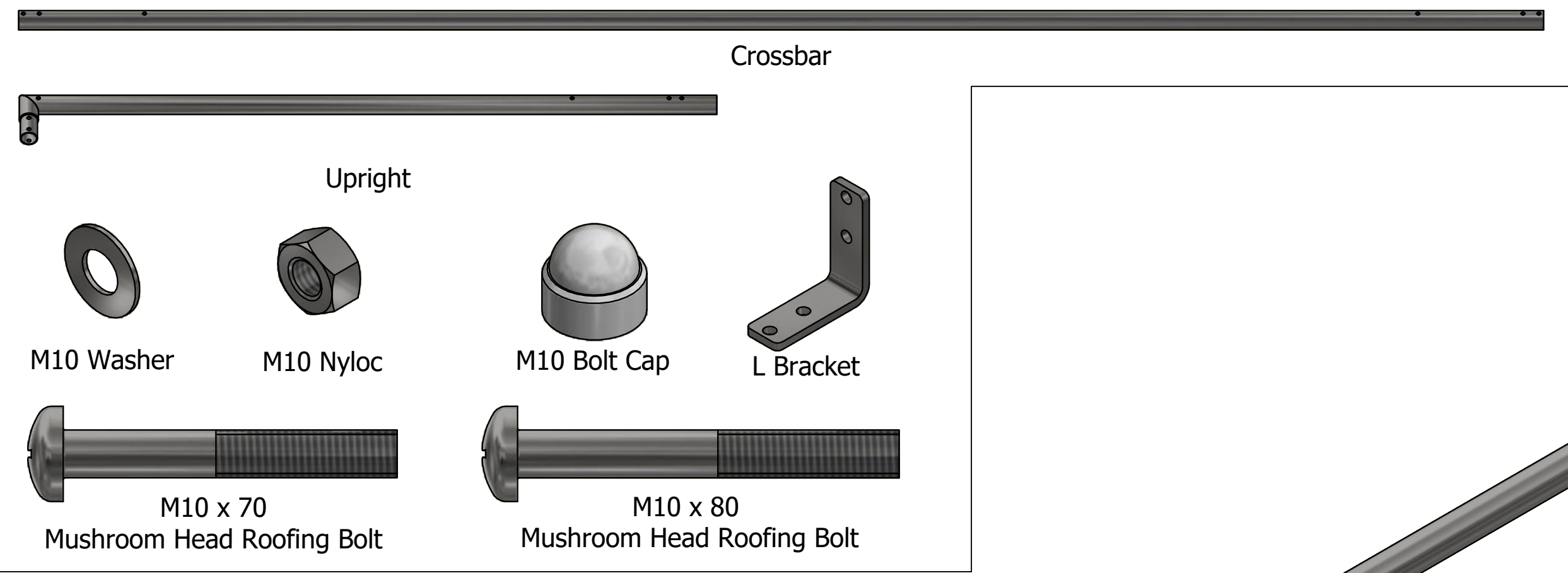


MH Goals Ltd,
Eliough Industrial Estate,
Beccles, Suffolk,
NR34 7TD

Intructions for
Freestanding 60mm Steel
Goals

SHEET 2 OF 11 REVISION 1

Parts Required



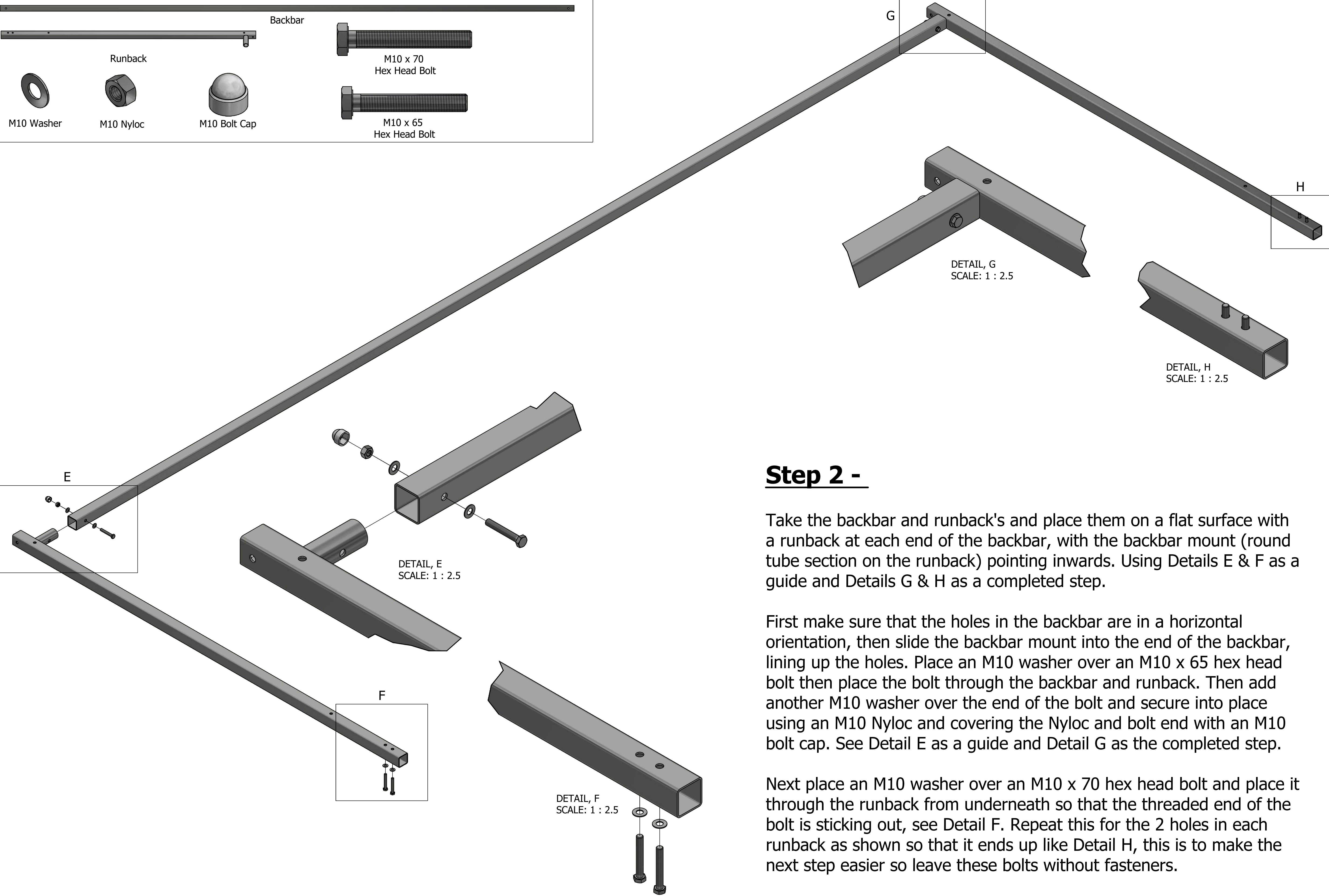
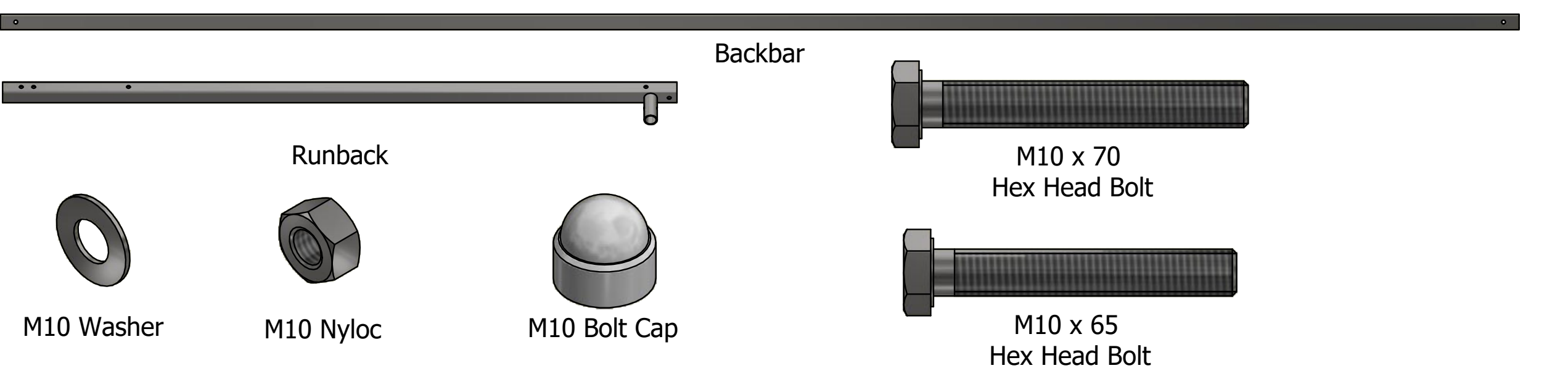
Step 1 -

Place the crossbar and uprights on a flat surface, with an upright at either end of the crossbar with their top corner pointing inwards, then using Details A & B as a guide of what to do and Details C & D as a finished step.

Slide the corners of the uprights into each end of the crossbar lining up the holes as shown by Detail A. To fasten the upright to the crossbar, place an M10 x 70 mushroom head roofing bolt through both the crossbar and upright. Then place an M10 washer over the end of the bolt, fasten using an M10 Nyloc and covering up the nut and bolt end using an M10 bolt cap, see Detail A. Repeat this on the opposite upright.

Next place an M10 x 80 mushroom head roofing bolt through both the holes at the bottom of the uprights as shown by Detail B, then place an L bracket over the bolts followed by an M10 washer and fasten into place with M10 Nylocs and covering with an M10 bolt cap as shown in Detail B.

Parts Required



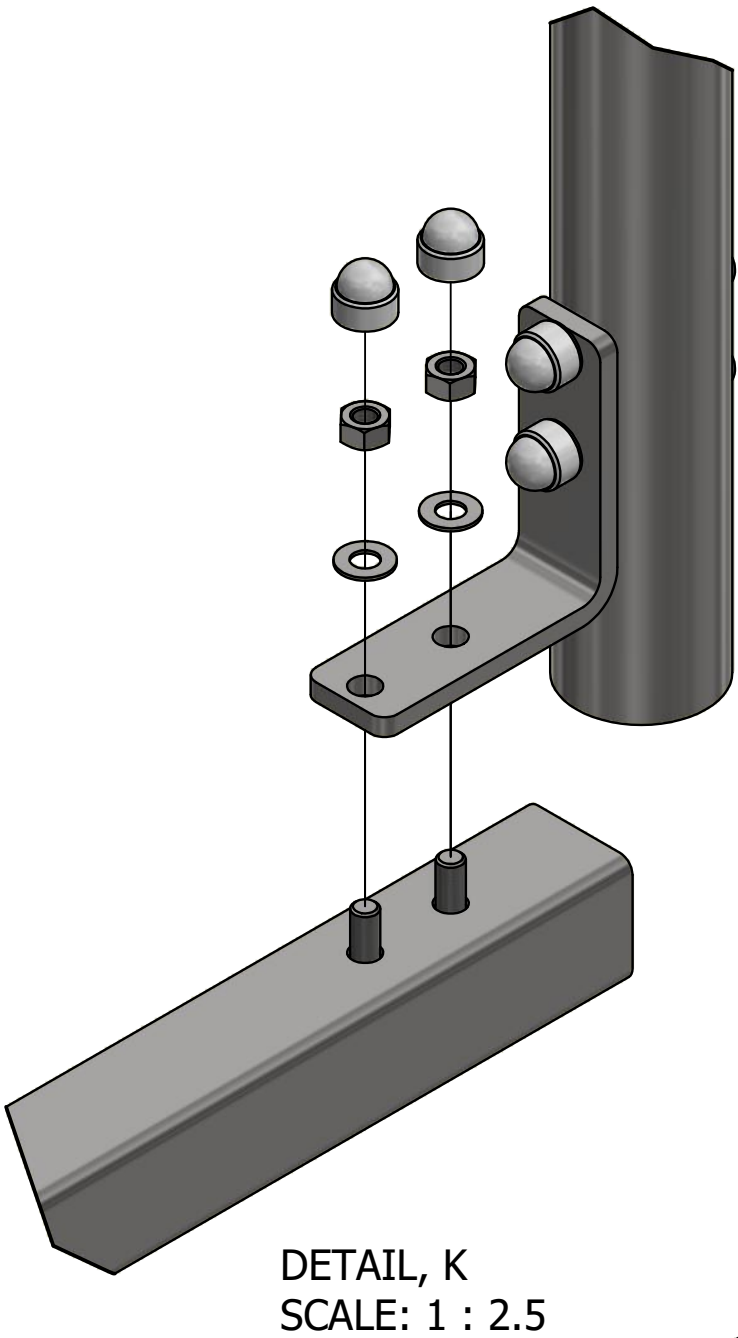
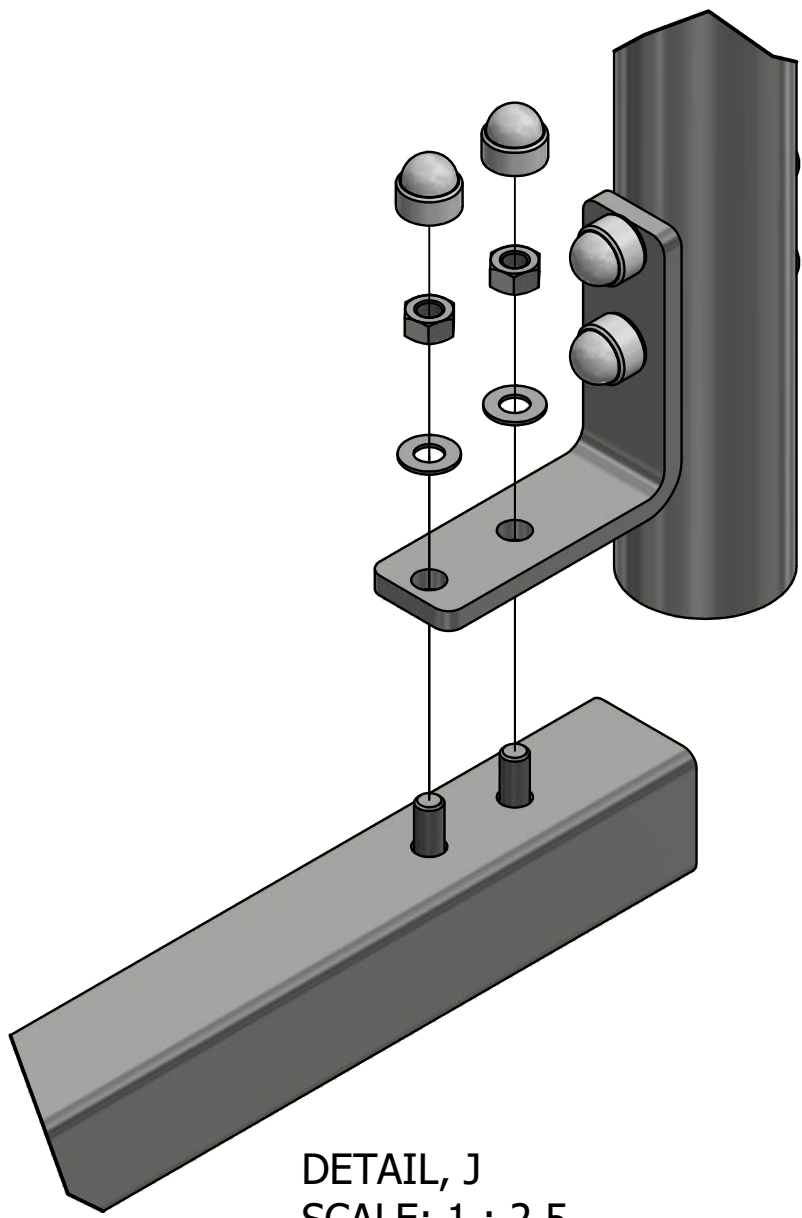
Step 2 -

Take the backbar and runback's and place them on a flat surface with a runback at each end of the backbar, with the backbar mount (round tube section on the runback) pointing inwards. Using Details E & F as a guide and Details G & H as a completed step.

First make sure that the holes in the backbar are in a horizontal orientation, then slide the backbar mount into the end of the backbar, lining up the holes. Place an M10 washer over an M10 x 65 hex head bolt then place the bolt through the backbar and runback. Then add another M10 washer over the end of the bolt and secure into place using an M10 Nyloc and covering the Nyloc and bolt end with an M10 bolt cap. See Detail E as a guide and Detail G as the completed step.

Next place an M10 washer over an M10 x 70 hex head bolt and place it through the runback from underneath so that the threaded end of the bolt is sticking out, see Detail F. Repeat this for the 2 holes in each runback as shown so that it ends up like Detail H, this is to make the next step easier so leave these bolts without fasteners.

Parts Required

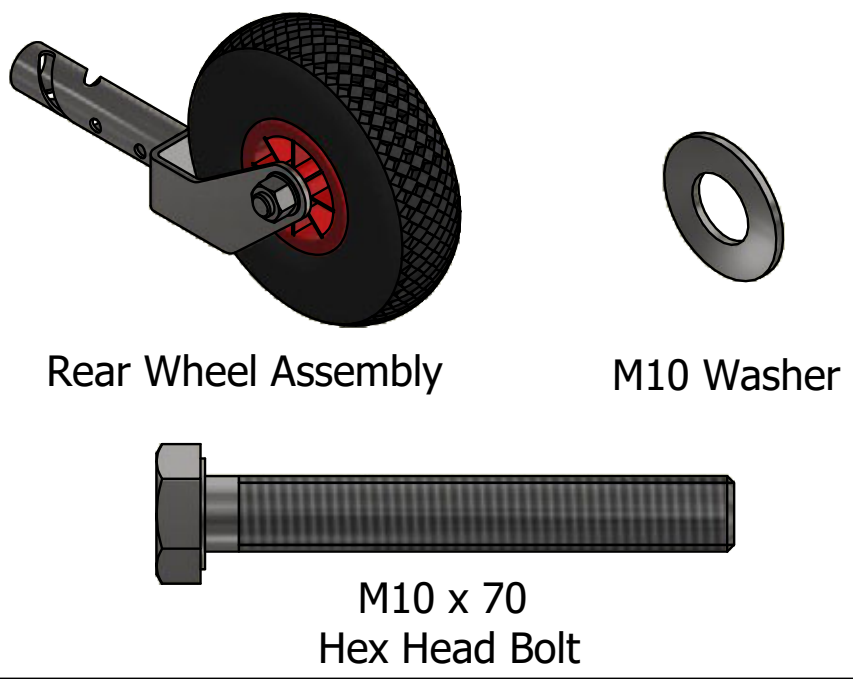


Step 3 -

This step will require a minimum of two people or more depending on the goal size, this is to prevent any harm or injury occurring.

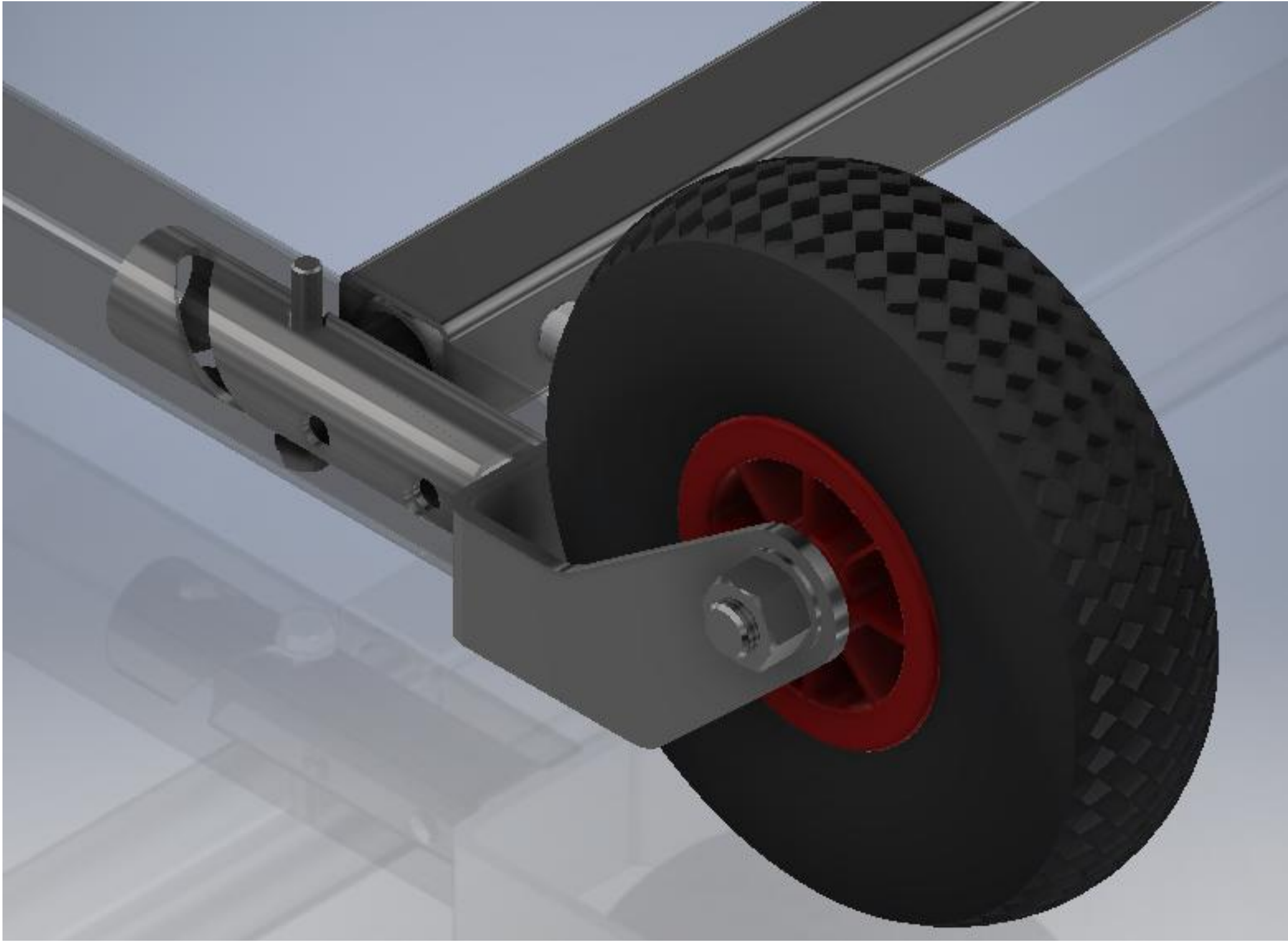
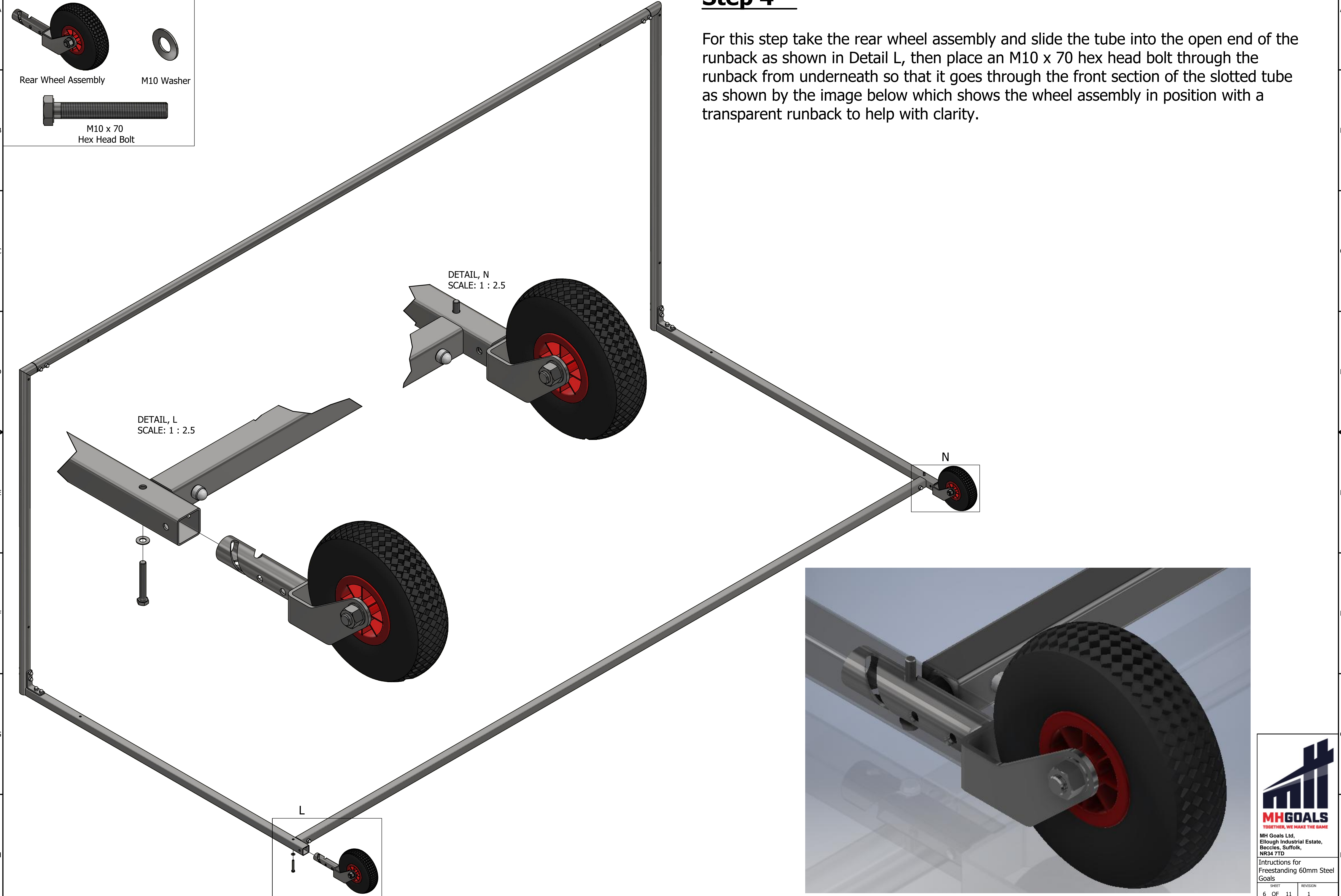
For this step take the goal mouth prepared in step 1 and rotate it so that it is stood upright, and place it up against the ends of the runback placing the L bracket over the bolts left from the last step. To fasten together place an M10 washer over the bolts followed by an M10 Nyloc and covered with an M10 bolt cap. See Details J & K as a guide.

Parts Required

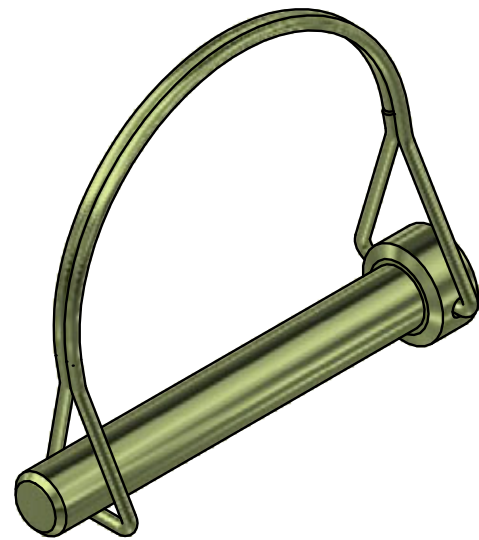


Step 4 -

For this step take the rear wheel assembly and slide the tube into the open end of the runback as shown in Detail L, then place an M10 x 70 hex head bolt through the runback from underneath so that it goes through the front section of the slotted tube as shown by the image below which shows the wheel assembly in position with a transparent runback to help with clarity.



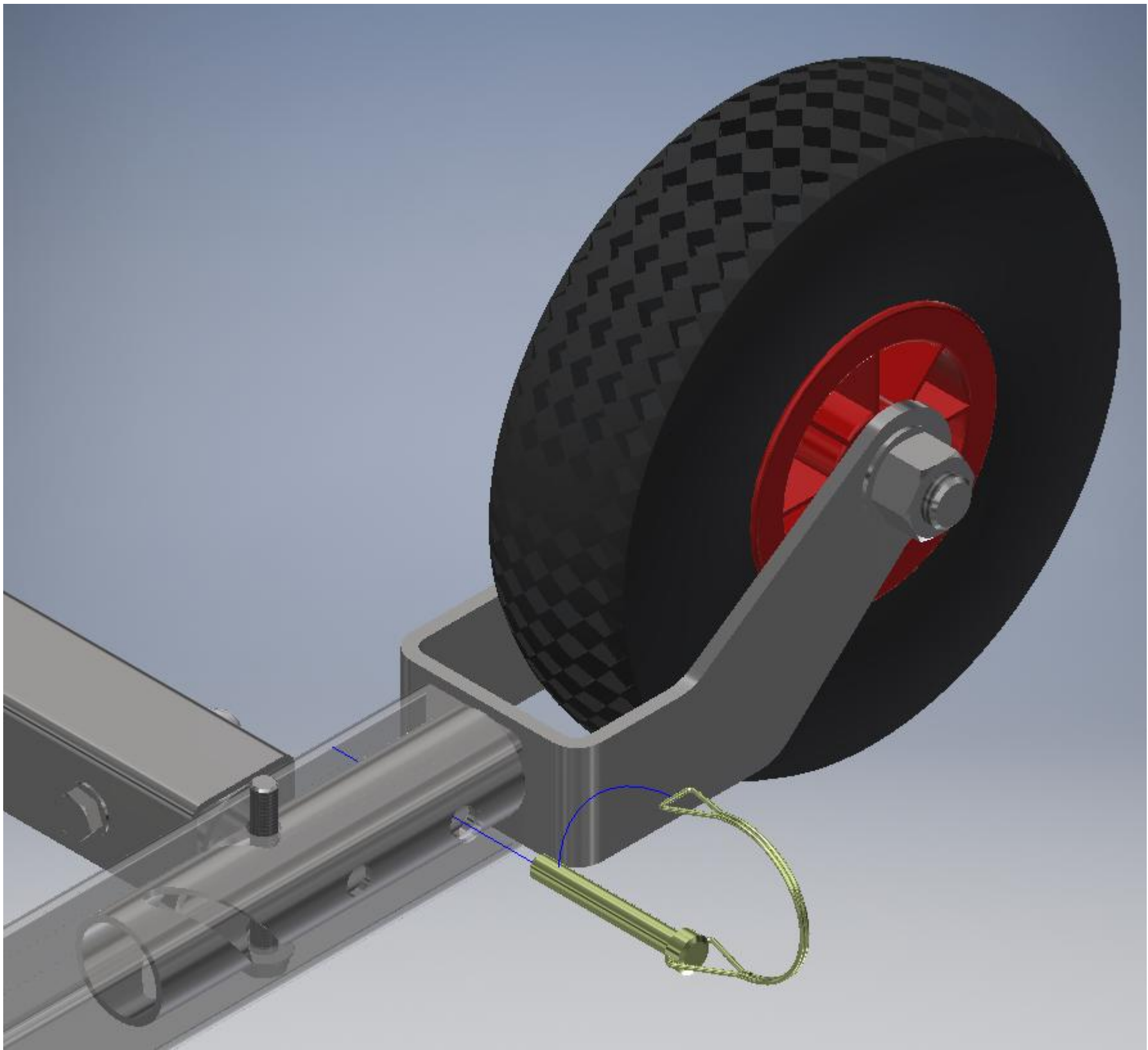
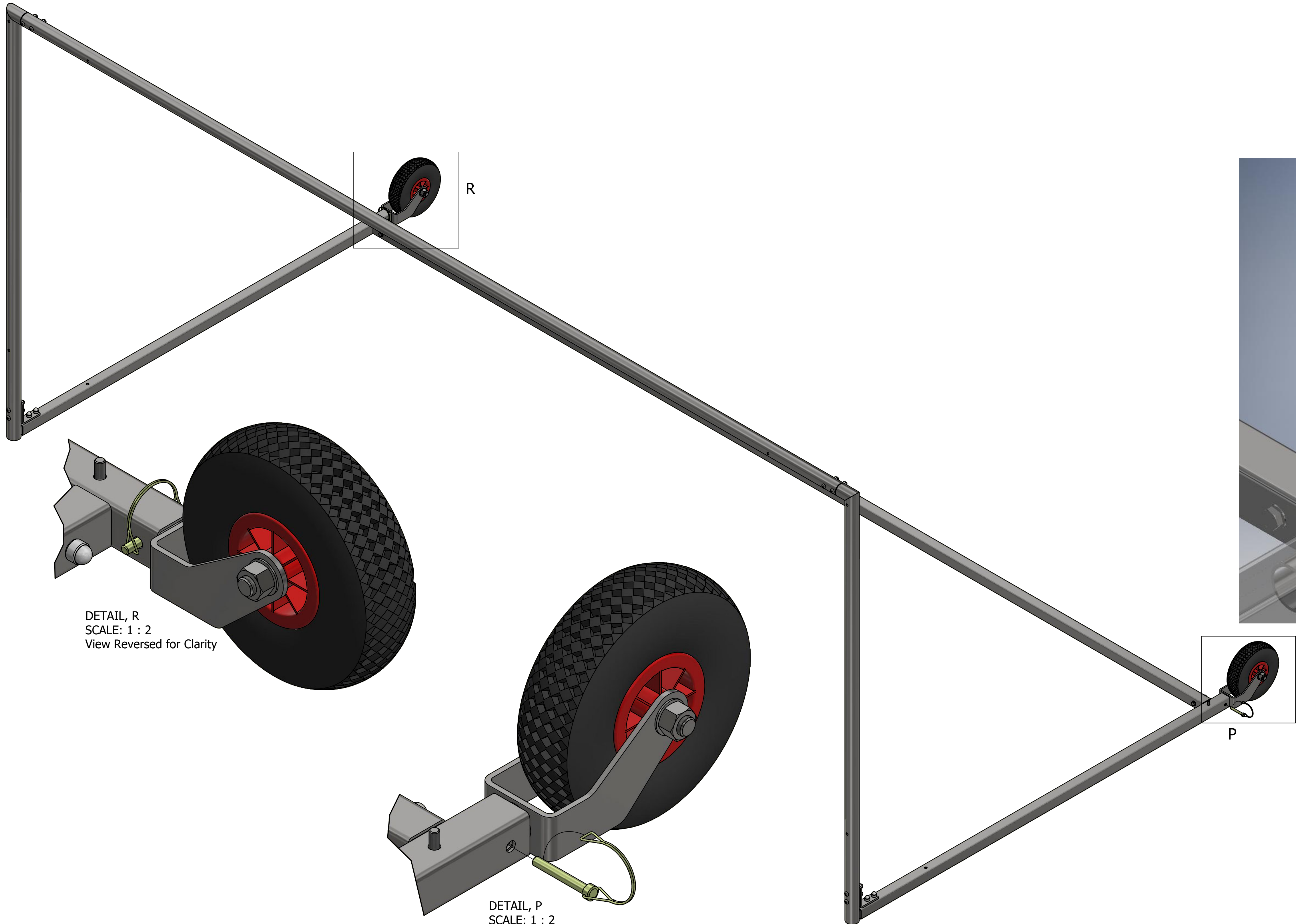
Parts Required



Spring Retaining Clip

Step 5 -

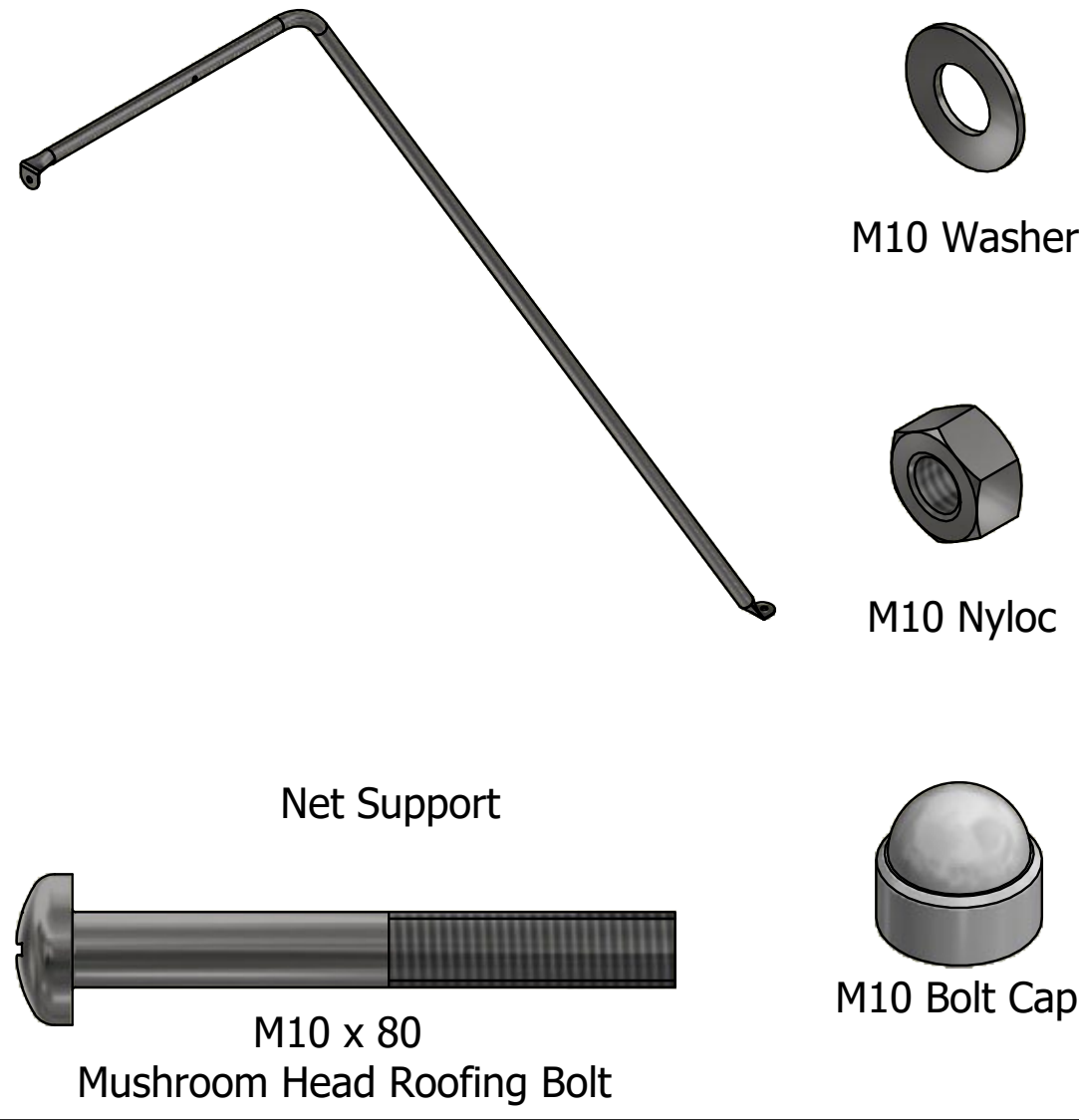
To lock the position of the rear wheel take one of the spring retaining clips, first undoing it so that the wire loop section is loose then placing the pin section of clip through the horizontal oriented hole at the end of the runback as shown in Detail P and the image below. Once the pin is all the way through move the wire loop section over the box section and do the clip back up by forcing the wire loop section over the end of the pin as shown in Detail R.



DETAIL, R
SCALE: 1 : 2
View Reversed for Clarity

DETAIL, P
SCALE: 1 : 2

Parts Required



Step 6 -

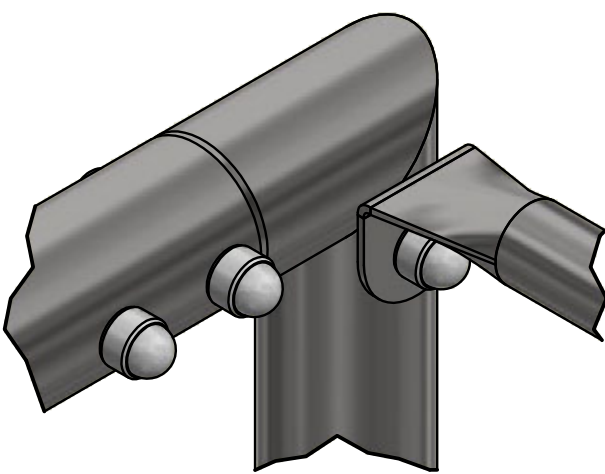
Next take the M10 x 80 mushroom head roofing bolts and place them through the hole in the upright near the top corner as shown in Detail T.

Then take the net support and hook the end with the straight section over the bolt in the upright and hook the other end over the bolt put into position in the last step as shown in Detail S.

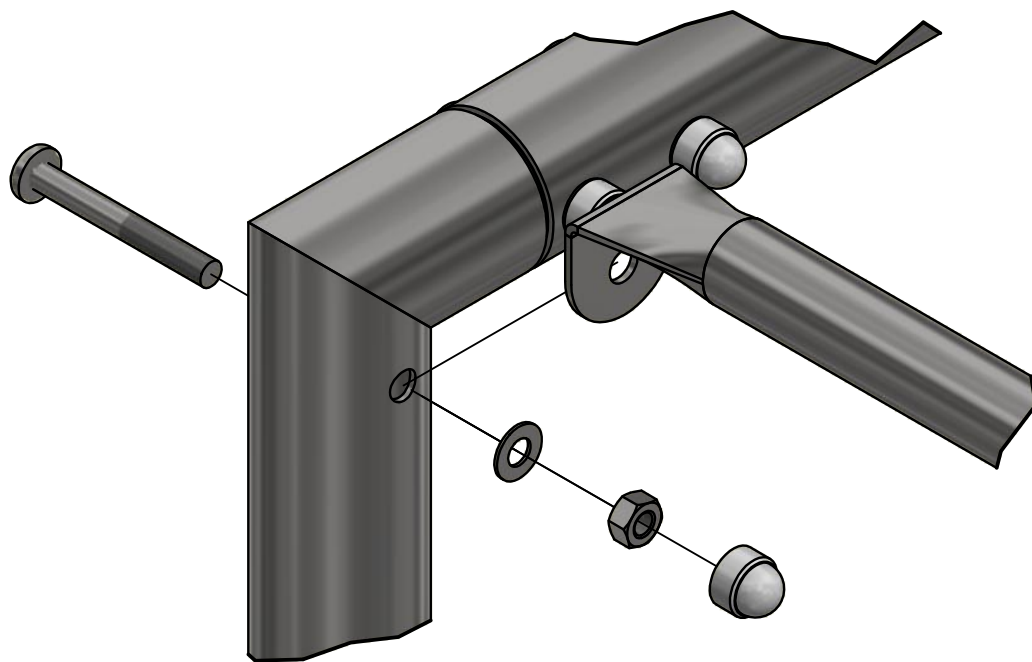
Now add an M10 washer over the net support and bolts and secure in place using M10 Nylocs, finally cover the end of the bolt and the Nylocs using the M10 bolt caps.

Repeat for the opposite net support.

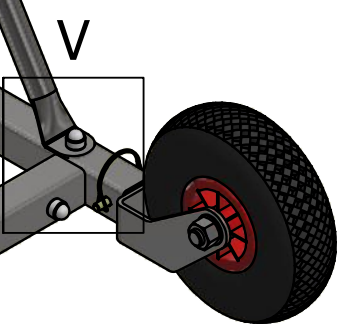
This step completed should look like Details U & V.



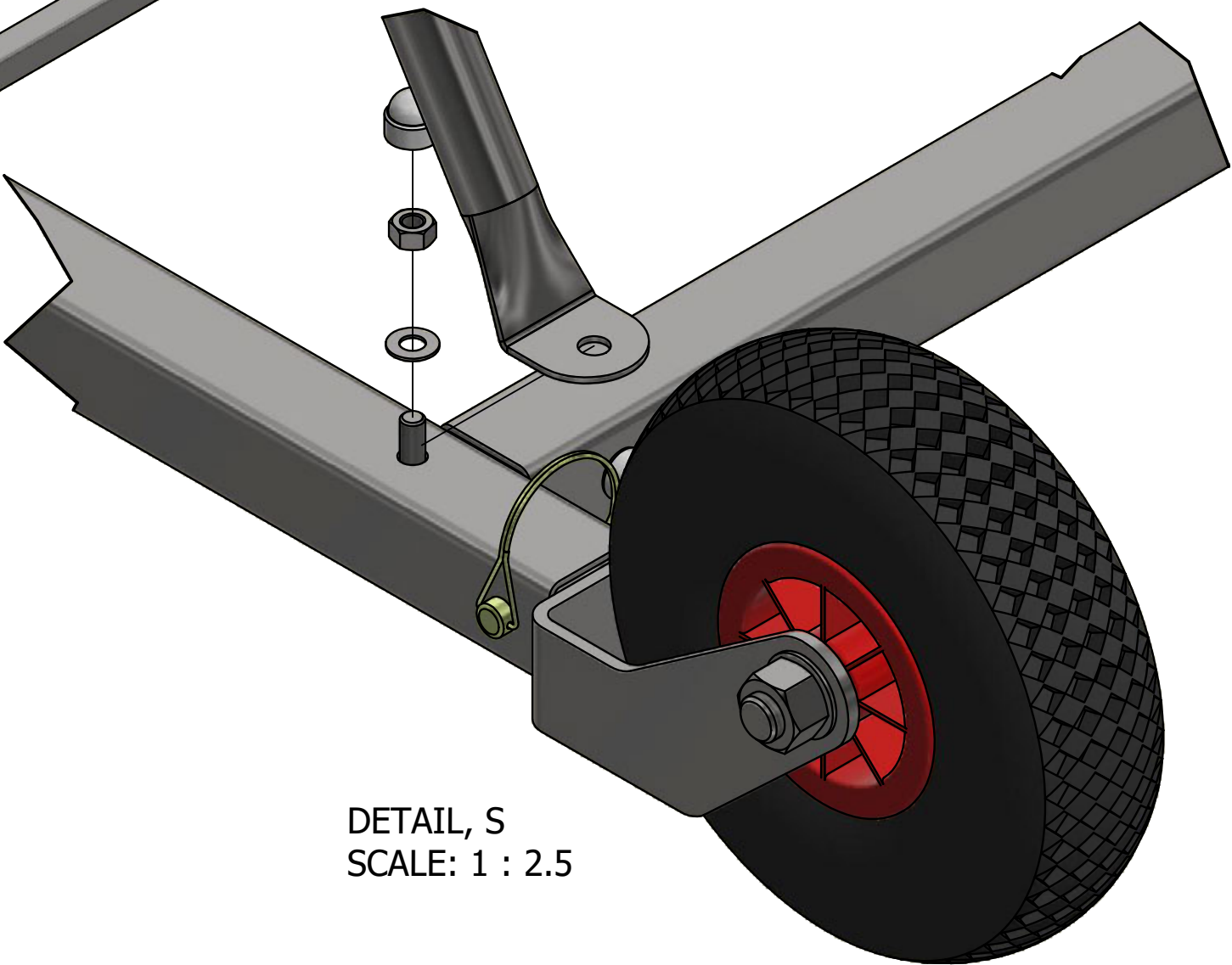
DETAIL, U
SCALE: 1 : 2.5



DETAIL, T
SCALE: 1 : 2.5

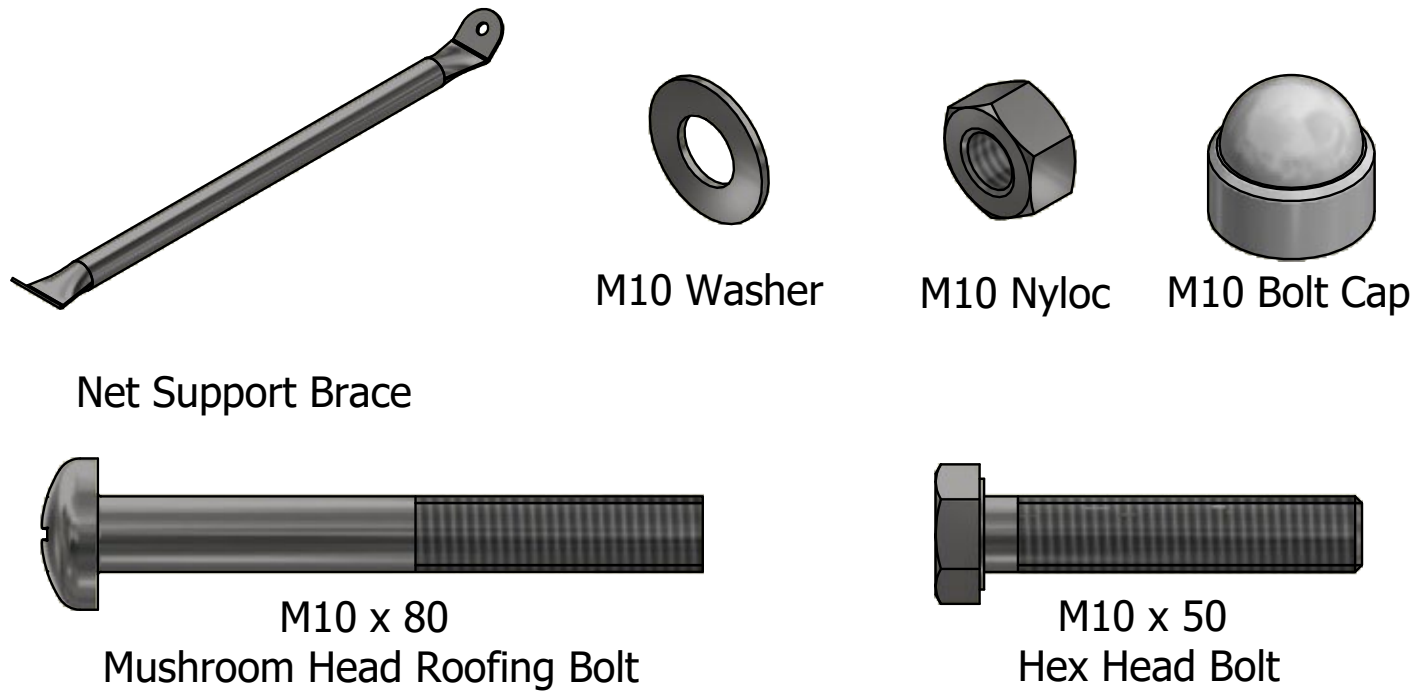


DETAIL, V
SCALE: 1 : 2.5



DETAIL, S
SCALE: 1 : 2.5

Parts Required

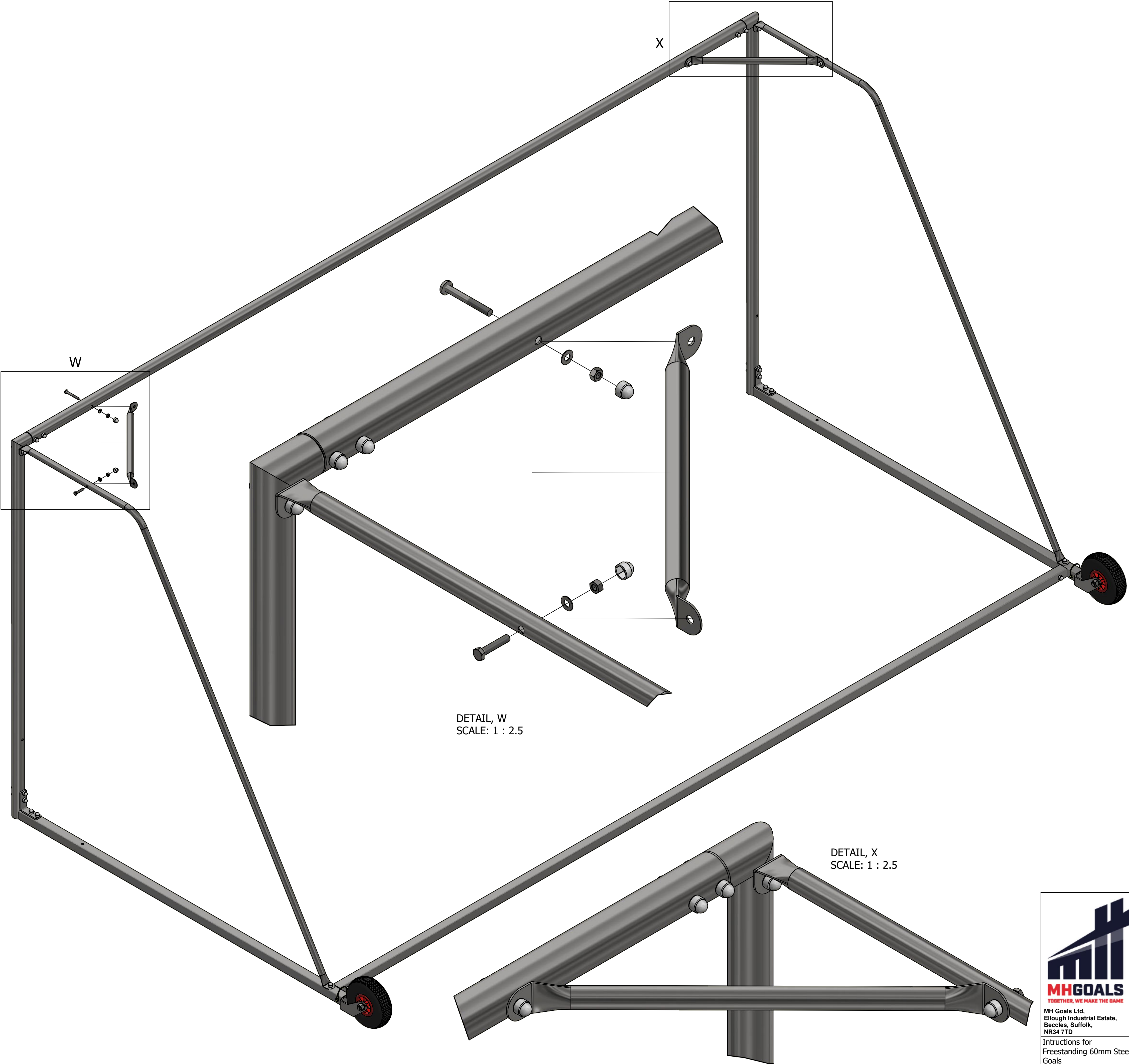


Step 7 -

To attach the net support brace first place an M10 x 80 mushroom head roofing bolt through the holes remaining in the crossbar and an M10 x 50 hex head bolt through the hole in each of the net supports, have the hex head bolts facing inwards as shown in Detail W.

Next take the net support braces and hook one end over each of the bolts, then place an M10 washer on top of the brace followed by an M10 Nyloc and covering using the supplied M10 bolt caps as shown in Detail W.

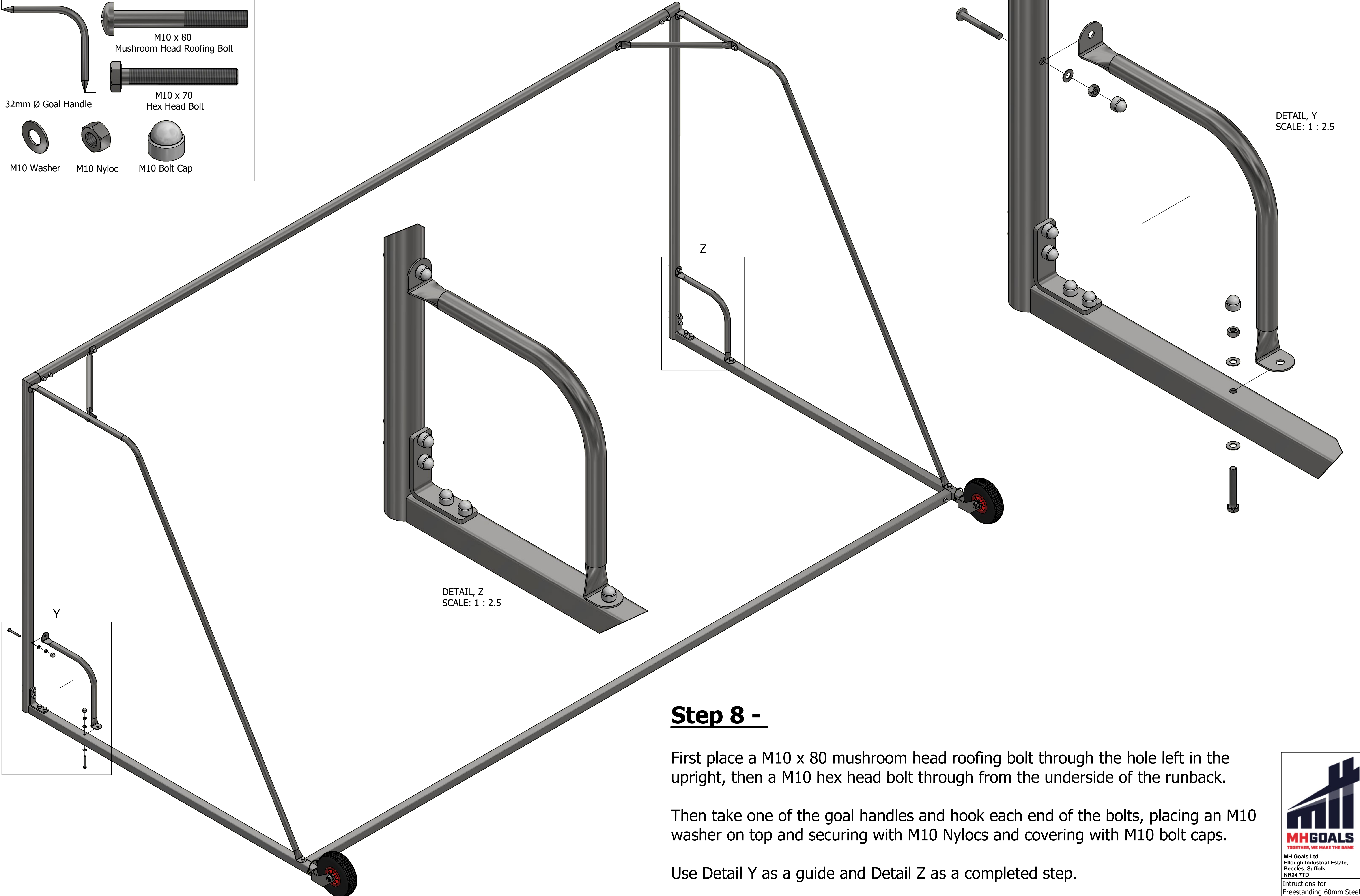
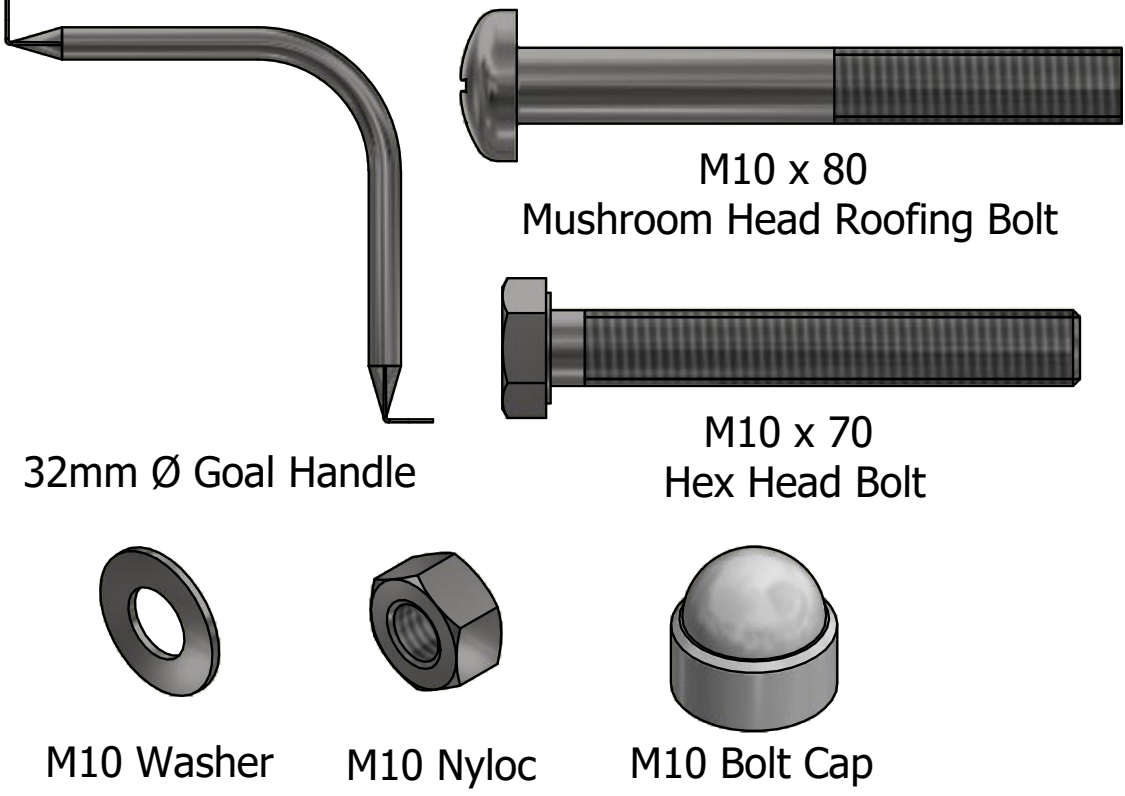
Detail X shows the completed step.



MH Goals Ltd,
Eliough Industrial Estate,
Beccles, Suffolk,
NR34 7TD

Intructions for
Freestanding 60mm Steel
Goals

Parts Required



Step 8 -

First place a M10 x 80 mushroom head roofing bolt through the hole left in the upright, then a M10 hex head bolt through from the underside of the runback.

Then take one of the goal handles and hook each end of the bolts, placing an M10 washer on top and securing with M10 Nylocs and covering with M10 bolt caps.

Use Detail Y as a guide and Detail Z as a completed step.

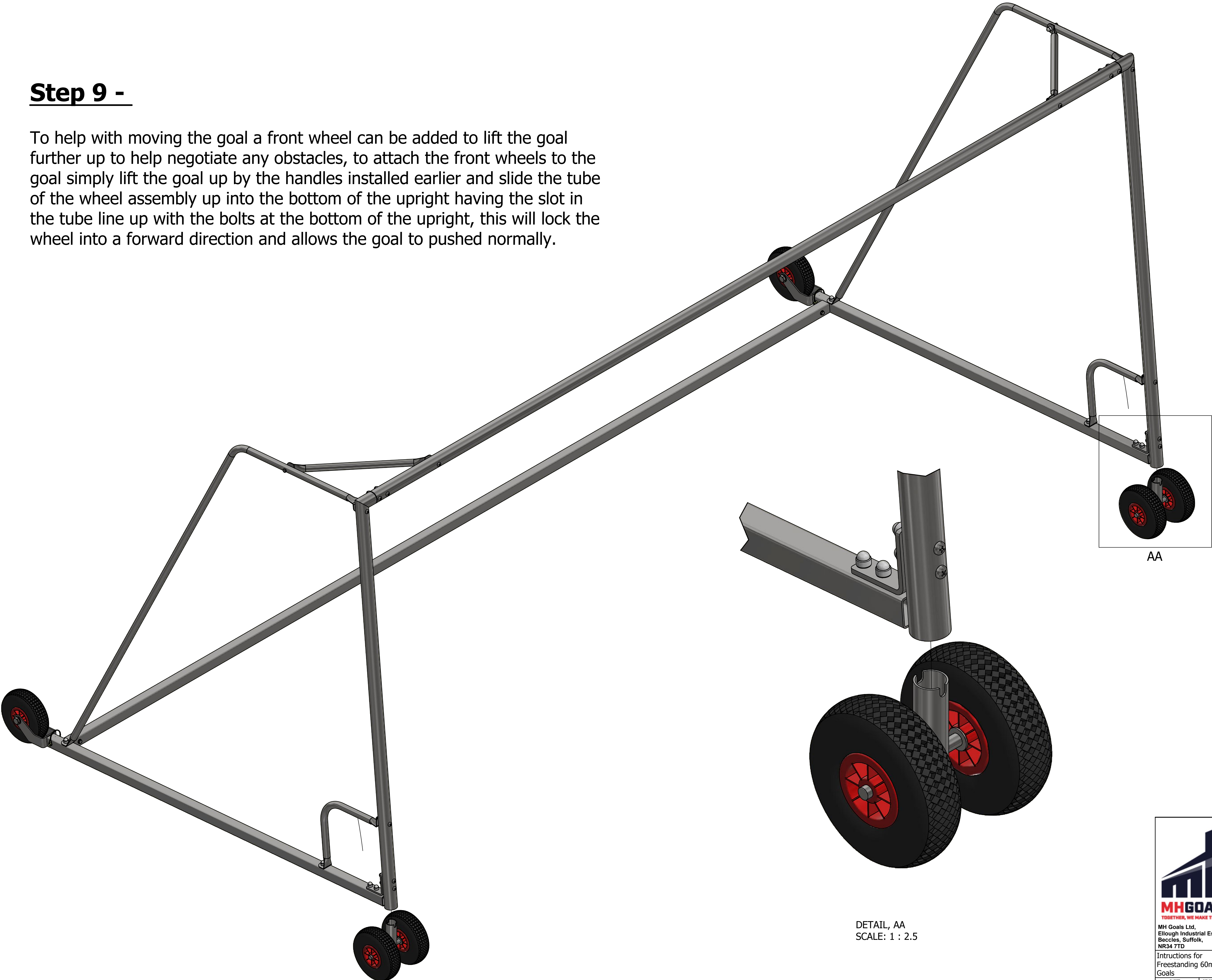
Parts Required



Freestanding 60mm Steel Goal
Detachable Front Wheel

Step 9 -

To help with moving the goal a front wheel can be added to lift the goal further up to help negotiate any obstacles, to attach the front wheels to the goal simply lift the goal up by the handles installed earlier and slide the tube of the wheel assembly up into the bottom of the upright having the slot in the tube line up with the bolts at the bottom of the upright, this will lock the wheel into a forward direction and allows the goal to pushed normally.



DETAIL, AA
SCALE: 1 : 2.5



MH Goals Ltd,
Eliough Industrial Estate,
Beccles, Suffolk,
NR34 7TD

Intructions for
Freestanding 60mm Steel
Goals

SHEET	REVISION
11 OF 11	1